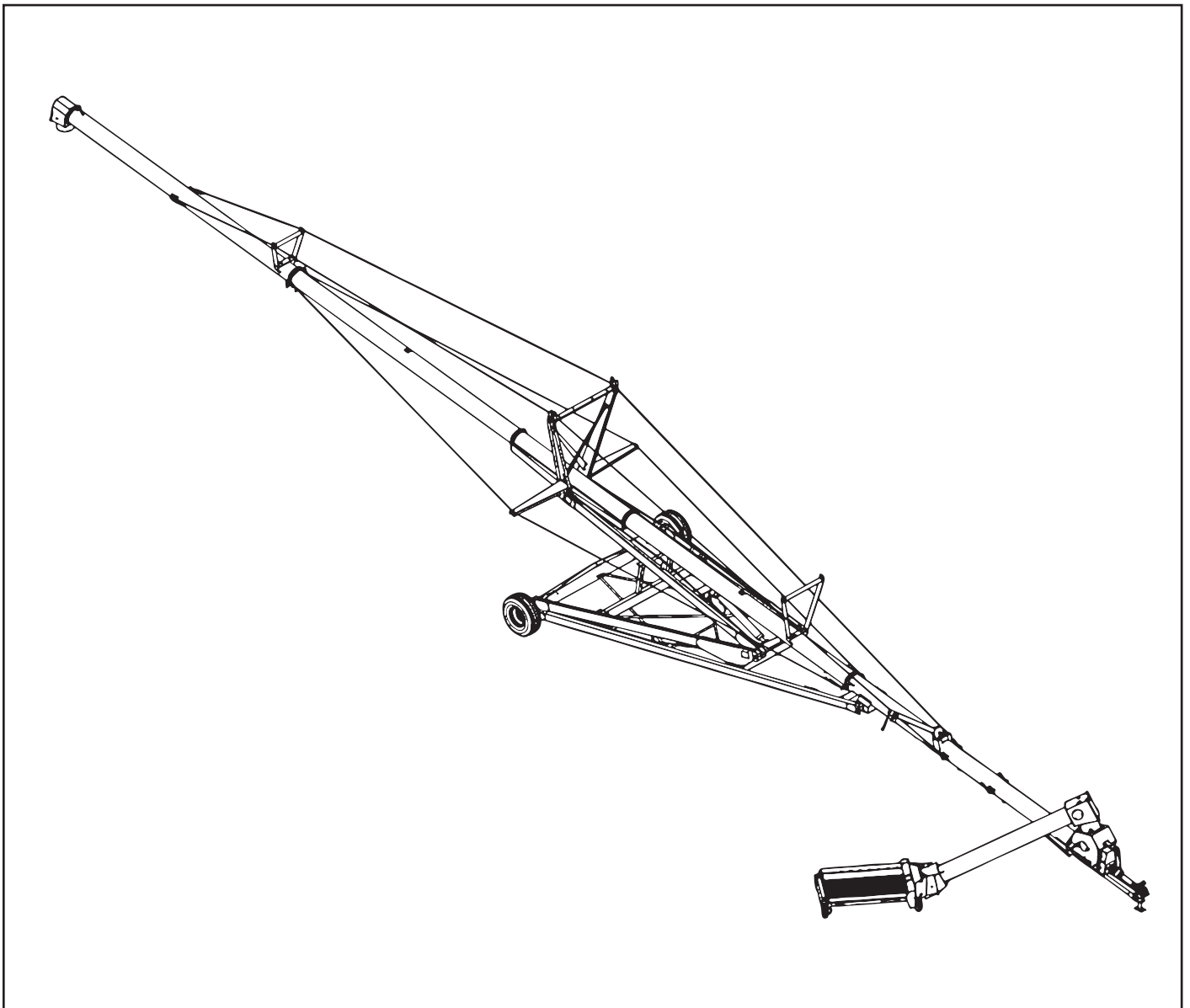




H1392 Grain Auger Operator's Manual



Read this manual before using product. Failure to follow instructions and safety precautions can result in serious injury, death, or property damage. Keep manual for future reference.

H13XX Augers: Important Notes

At 15–20 miles, tire lug nut tightness and wheel hub temperature need to be checked.

At 50–60 miles, check these a second time.

For the **H1392**, 102, and 112, the maximum transport speed is **25 mph**.

For the H1362, 72, and 82, the maximum transport speed is 45 mph.



Harvest International thanks you for your purchase of the best quality auger on the market. We are proud to have you on our team. Our equipment is manufactured in the United States of America and is made to improve your farming operation. Before you operate this auger, we advise that you read this manual and familiarize yourself with each of the features. Please take all the precautions necessary for an efficient and safe operation. Harvest International recommends that anyone using this auger read the operational manual and sign on the sheet provided below. This is to be kept for your record keeping.

Date	Employee Name	Employee Signature

TABLE OF CONTENTS

1. Introduction	5
2. Safety First	6
3. Transportation & Placement	7
3.1 Before Transporting Your Auger	7
3.2 Transport Procedure	8
3.3 Placement of Auger	8
3.4 Final Placement	10
3.5 Lowering the Auger	10
4. Operation	11
4.1 Pre-Operation Checklist	11
4.2 Auger Drive & Lockout	12
4.3 Start Up & Break In	12
4.4 Everyday Operation	13
4.5 Shutting Down the Auger	14
4.6 Completion & Cleanup	14
4.7 Lowering the Auger	15
5. Hydraulics	15
5.1 General Information	15
5.2 Cylinder Hydraulics	16
6. Storage & Maintenance	17
6.1 General Maintenance	17
6.2 Storage of Auger	19
7. Appendix & Forms	20
H13XX Parts Book	20
H13XX Lubrication Requirements	39
Warranty Policy and Forms	42

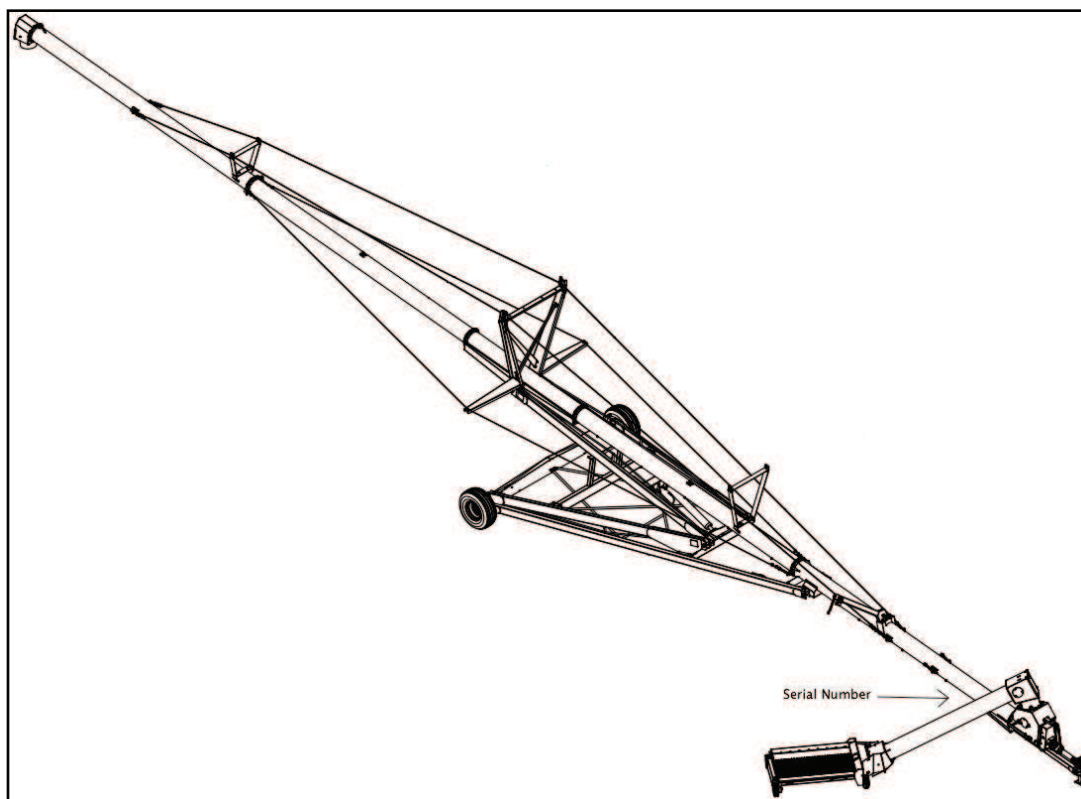
1. Introduction

Congratulations on your choice of a Harvest International auger! This equipment has been designed and manufactured to meet the needs of the discerning buyer.

Safe and efficient operation of your auger requires that you, and anyone else who will be operating or maintaining the auger, read and understand the safety, operation, maintenance, and troubleshooting information in this manual.

Keep this manual handy for frequent reference and to pass on to new operators or owners. Call your Harvest International distributor or dealer if you need assistance, information, or additional copies of the manual.

Always give your dealer the serial number of your Harvest International Grain Auger when ordering parts or requesting service or information.



The serial number on your auger is located where indicated by the arrow in the picture above. Please mark the number in the space provided below for easy reference.

Model Number: _____

Serial Number: _____

Production Year: _____

2. Safety First

Safety is a priority in your everyday work habit, especially if you work with machinery. Whether you are an owner, an operator, or an employee, it is your responsibility to know the operational requirements and safety precautions of the machinery.

Why is safety important to you?

1. Accidents disable and kill.
2. Accidents cost.
3. Accidents can be avoided.

SIGNAL WORDS:

Note the use of the signal words **DANGER**, **WARNING**, **CAUTION**, and **NOTICE** with the safety messages. The safety alert symbol identifies imminent and potential hazards to personal health and safety. The appropriate signal word for each message has been selected using the definitions below as a guideline:



DANGER: indicates an imminently hazardous situation that, if not avoided, will result in serious injury or death.



WARNING: Indicates a hazardous situation that, if not avoided, could result in serious injury or death.



CAUTION: Indicates a hazardous situation that, if not avoided, may result in minor or moderate injury.



NOTICE: Indicates a potentially hazardous situation that, if not avoided, may result in property damage.

3. Transportation and Placement

3.1 Before Transporting your Auger

Remove wheel chocks, so wheels are free to move.



DANGER:

If auger wheels are stuck in grain, mud, dirt, or snow. remove the restraining substance from around the wheels before transport. Failure to do this could cause damage to the auger, and serious injury or death.

All Harvest International augers have minimum clearance positions when in transport mode. Place auger in full down position.



DANGER:

Electrocution Hazard! Make sure that all unauthorized personnel are clear from the transport zone. This auger is not insulated. Be alert to overhead obstructions and electrical wires. Electrocution can occur without direct contact. Do not raise or lower auger until hazardous area is cleared. Failure to maintain proper clearance can result in serious injury or death.

Put hitch pin in place, and ensure that the safety chain is properly attached. Use a type of hitch pin that will not allow the auger to detach itself from the tractor. If you have questions about appropriate hitch pins, contact your tractor manufacturer.

Put PTO driveline and swing hopper into transport position and lock into place. If swing hopper is not in transport position, the hopper will be damaged during transport.

Put jack in raised position and lock into place. Use caution when working with hitch jack.

If you have a light package for your auger, make sure the connections are fastened securely and not dragging on the ground.

3.2 Transportation Procedure

Move auger with a tractor only. Never attempt to move by hand.

Under no condition should you allow riders on the auger or tractor.

Transport the auger no faster than 15 mph. When roads are rough or surfaces are uneven, slow down to ensure safe travel.



DANGER:

Do not transport the auger on slopes greater than 20 degrees. This could cause the auger to tip, resulting in damage to the auger, and personal injury or death.

When visibility is reduced, please use caution and add extra lights to the auger. Consider using a pilot vehicle for safer travel.

Use extreme caution when turning or cornering with the auger in tow.

Check regulations with local authorities regarding auger transportation. Follow all over-width regulations. Equip auger with all necessary lighting, and use hazard warning flashers on your tractor, when required by law.

3.3 Placement of Auger

Before raising or lowering your auger, check that the area is clear of obstructions, children and unauthorized personnel.



DANGER:

Electrocution Hazard! Make sure that all unauthorized personnel are clear from the transport zone. This auger is not insulated. Be alert to overhead obstructions and electrical wires. Electrocution can occur without direct contact. Do not raise or lower auger until hazardous area is cleared. Failure to maintain proper clearance can result in serious injury or death.

Ensure that your auger is on level ground that is free of debris.



DANGER:

If ground is very uneven, auger can tip and cause damage to the equipment and personal injury or death.



WARNING:

Never position raisers of any kind under the wheels of the auger to increase height. This includes pieces of wood, cement blocks, bricks, etc. Attempting this could result in damage to the equipment and personal injury or death.

Make sure that the hitch is secured to the tractor, and that all hydraulic connections are tight and in good working condition. If there are any leaks or damaged hoses, you must replace these before using your auger. Replacement hoses and hose ends must have a minimum strength of 1900psi working pressure.

Make sure that the wheels of your auger are free to move before you raise or lower your auger.



CAUTION:

If the auger wheels are buried in any type of material, do not attempt to raise or lower the auger. Remove dirt, snow, grain, or whatever other material is obstructing the auger before use.

Check that the valve on the hose to the lift cylinder is open. Double check that the area above and around the auger is clear of obstructions. Raise auger to desired height, and close hose valve after auger is positioned.



WARNING:

If hose valve remains open, a loss of hydraulic pressure within the tractor system will allow the auger to lower by itself; this could cause damage to the auger and personal injury or death.



NOTICE:

Do not use the auger as a hoist or crane, no matter the size or weight of the object being lifted. This will create an unsafe condition and void your warranty.

3.4 Final Placement of Auger

When you are ready to use your auger, place the auger in its lowered position, and slowly back it up to your bin or storage facility, keeping an eye out for any people or obstructions in the hazard zone.



DANGER:

Avoid any electrical wires and overhead obstructions. Electrocutation can occur without direct contact. Failure to listen to this warning can result in personal injury or death.

Use tractor hydraulics to raise the auger into position. Slowly back the auger into position until the spout is over the opening of the bin or storage facility and use tractor hydraulics to slowly lower the spout into the opening.

As soon as the auger is in position, the wheels of the auger must be chocked on both sides. To prevent tipping, anchor or support the discharge end to the bin or storage facility to further stabilize the auger.

3.5 Lowering the Auger

Attach auger to tractor, making sure that your hydraulics are also attached to the tractor. Raise the auger, to ensure that the outlet end is above the bin or storage facility. Remove wheel chocks and ensure area is clear of personnel and obstructions.

Drive forward, pulling auger slowly away from the bin or storage facility. Be sure that the wheels are free to move, and lower the auger. Make sure auger is in full down position before proceeding.

4. Operation

Wear protective gear at all times when operating auger, such as hard hats, protective shoes, eye protection, and gloves. Do not wear loose clothing, and be sure that hair is tied back.

4.1 Pre-Operation Checklist

Before operating the auger, the operator must follow this checklist:

All safety shields are in place, secure, and in good working order.	
Cables are secure.	
Fasteners are secure.	
PTO driveline is securely attached to driveshaft and tractor.	
PTO driveline rotates freely.	
PTO driveline telescopes easily.	
Tube alignment is reasonably straight.	
Auger wheels and tractor wheels are chocked.	
Intake hopper and discharge spout are free of any obstructions.	
A second qualified person is present during operation.	
All operators have read manual and are aware of safety precautions.	
Maintenance has been performed properly.	
Power to PTO and hydraulic system is in off position before starting tractor.	
Hydraulic system has been thoroughly checked for leaks. (see Section 5 “Hydraulics” for details).	

4.2 Auger Drive & Lockout

The proper operation of this auger requires that the operator pre-inspect the drive system, know how to shut down the system in an emergency, and generally monitor the system during operation.

Drive System and PTO Driveline: Ensure that the PTO drive on the tractor is in the off position before starting the tractor. Stay clear of PTO hazard area. Do not exceed the maximum operation length of 34 inches of PTO driveline, or the maximum angularity of 30 degrees.

Lockout/Shutdown of PTO Driveline: Turn off engine. Remove ignition key from tractor. If for some reason, you cannot remove the key, remove the PTO driveline from the tractor.

4.3 Start Up & Break In



DANGER:

Electrocution Hazard! Make sure that all unauthorized personnel are clear from the operation zone. This auger is not insulated. Be alert to overhead obstructions and electrical wires. Electrocution can occur without direct contact. Do not raise or lower auger until hazardous area is cleared. Failure to maintain proper clearance can result in serious injury or death.

Have you completed the pre-operational checklist? If everything is satisfactory, prepare for a 30 minute operation at half speed to break in your auger. Double check that the intake hopper is properly positioned, and the PTO drive on the tractor is in the off position.



NOTICE:

When starting the auger for the first time, be prepared for an emergency shutdown in case of excessive vibration or noise. The auger may run roughly until the tube is polished.

Start the tractor and idle at low RPM. Slowly engage the PTO driveline.

Gradually begin to feed grain into the intake hopper, bringing the speed of the PTO to 200 RPM. Do not over-feed the hopper on initial loads; keep the feed of the grain at half capacity. After the auger tube is polished and runs smoothly, proceed to unload at full speed (at but not to exceed 540 RPM for maximum efficiency).

Upon completion of initial run, slow down until the auger is empty of grain, and stop auger. Lock out the power source and conduct a complete inspection of the auger, following the pre-operation checklist. After the initial start up and inspection, the auger should be shut down and inspected at least three times during the first hours of operation. Once your auger is broken in, the pre-operation checklist should be part of the daily routine before you operate the auger.

4.4 Everyday Operation



WARNING:

When auger is in operation, keep your hands, clothing, and other objects away from intake hopper, drive chains, and all other parts of auger to avoid personal injury.

For normal auger operations, the following procedure and safety precautions are strongly recommended:

Complete the pre-operation checklist before using your auger.

Remember to ground motor before using auger if an electric motor is being used.

When using the auger, work with another trained operator present to monitor the operation and help with a shutdown in case of an emergency. Monitor the auger during operation for vibration and abnormal noises. If anything out of the ordinary is noted, shut down and lock out the auger, determine the source, and correct before continuing operation.

Keep the hopper full and running at 540 RPM for maximum capacity. Pour grain in the middle of hopper, closest to the tube for best results.

Run the auger only when moving material. Running the auger without grain moving through causes unnecessary wear.

4.5 Shutting Down the Auger

Empty the auger of all grain. Disengage the PTO drive. Shut down and lock out power.



WARNING:

Never use your hands to clean out debris from auger. Rather, use a small shovel or other tool.

In the case where there has been an interruption or emergency shutdown, restart the auger as follows:

If auger is full of grain, do not restart at full speed. Engage PTO at low RPM and gradually increase power until normal operating speed is achieved.



CAUTION:

Starting the auger under load may result in damage to the auger. Make sure there is no blockage.

4.6 Completion and Cleanup

At completion of operation, the auger needs to be moved into storage position. Make sure that the entire work area is clean, remove all supports and wheel chocks, move auger out of working position, and fully lower the auger (see lowering procedure below).

The proper steps for clean out of the auger are as follows:

- 1) Disengage power source; lower the auger into transport position.
- 2) Shut off tractor and lock out power.
- 3) Move intake hopper into transport position and latch with safety chain.
- 4) If necessary, clean out grain using small shovel or other tool.



WARNING:

Do not leave auger in raised position when not in use. Auger could drop rapidly in case of hydraulic failure. High winds may also upset the auger. Because the hydraulic scissor lift is faster than a hand crank system, use extra caution and clear area of personnel before raising or lowering auger.

4.7 Lowering the Auger

Check that auger and hose couplers are securely attached to your tractor.

You may need to raise the auger discharge end up and out of bin or storage facility before proceeding.

Remove wheel chocks, and check that the area around and under the auger is clear of debris and unauthorized personnel. Wheels must be free to move when raising or lowering the auger.

Slowly pull away from bin or storage facility. As soon as you are clear, engage the hydraulics and lower the auger. Once valves are open, the auger lowers by gravity. Rate of descent increases the closer the auger gets to the down position. Be cautious.

Transport auger only in fully lowered position.

5. Hydraulics

5.1 General Information

Be sure that all safety precautions and proper operation procedures are fully understood before connecting the auger hydraulic hoses. Harvest International strongly recommends doing a daily visual check for damage to the hoses and connectors. Replace any damaged parts before operation.



WARNING:
Wear proper face and hand protection when searching for hydraulic leaks. Fluid can escape under pressure, causing infection or toxic reaction on skin. See a doctor immediately if injured.

Escaping hydraulic fluid can be nearly invisible under high pressure. Use some type of backdrop when searching for leaks.

Harvest International augers have a velocity fuse for hydraulic safety. If the hydraulic line breaks, it locks the system. Our shut off valve is equipped with a

flow restrictive orifice. After you have repaired the hydraulic hose, the system resets itself and is ready for operation.

There are various types of tractor hydraulic systems; the quick connect couplers are supplied by the owners. Please consult your tractor manual for the proper couplers.

Before you connect your hydraulic hoses, check that the quick connect couplers on the auger and tractor are clean and free of any dirt or debris; wiping them down with a cloth.



CAUTION:
Dirt in the hydraulic system can damage the cylinder o-rings. This may cause leakage and possible system failure.

Do not disconnect the hydraulic coupler when the system is under pressure. Relieve all pressure and then disconnect.

5.2 Cylinder Hydraulics

The testing done on Harvest International auger hydraulics was done using a pressure gauge with 3000psi maximum rating. This was used simply as a guide. The psi requirements for an individual auger may vary slightly.

Auger	Size	PSI
H1062	10" x 62'	1300
H1072	10" x 72'	1400
H1082	10" x 82'	1600
H1362	13" x 62'	1600
H1372	13" x 72'	1800
H1382	13" x 82'	1900

Have approximately four liters of hydraulic fluid in your system. Check that the valve on the hose to lift the cylinder is open. Start tractor and engage hydraulics. Raise the auger to desired height, and close hose valve. You must turn valve while the hydraulic system is pressurized; do not disconnect hydraulic couplers.



WARNING:

If valve hose remains open, a loss of hydraulic pressure within the tractor system could allow the auger to lower unexpectedly, causing damage to the auger and personal injury.

To lower the auger, reconnect hose couplers to the tractor. Ensure that area is clear and wheels are free to move. Open the hose valve, start your tractor, and engage hydraulics. The auger is fully lowered when the tube is resting on the tube saddle.



NOTICE:

After valves are opened, the auger lowers by gravity. As the auger nears the full down position, the rate of descent will increase.

6. Maintenance & Storage

Proper maintenance of auger will result in both a longer life of the auger and a safe and efficient operation.

6.1 General Maintenance

Always replace damaged or worn parts before using the auger. Use only replacement parts manufactured by Harvest International, Inc. Use of unauthorized parts will void the warranty of your auger. Contact your Harvest International dealer to order parts.

Harvest International augers are designed and tested for a safe, efficient operation. Do not modify the equipment in any way. Modification to the auger can create an unsafe working condition, affect the life of the equipment, and will void your warranty.

Before performing maintenance on your auger, shut down and lock out all power. Disconnect the PTO driveline from the tractor. Support the auger tube before attempting maintenance on the undercarriage. The auger should be in full down position before attempting maintenance.

After Maintenance is completed, replace and secure all safety shields, safety devices, service doors and cleanout covers.

See section 5, “Hydraulics” for information on maintenance of hydraulic hoses.

See section 7, “Appendix & Forms” for expanded lube information.

Truss Cables: Replace cables if frayed or damaged. Be sure clamps are secure. Adjust cables as needed to keep the auger tube reasonably straight.

Wheel Hubs: Repack hubs every two to three years to lengthen the life of the hubs.

Tire Pressure: Check tire pressure monthly. The recommended tire pressure should be maintained at 40 to 45 psi.

PTO Driveline: Lubricate both universal joints after every eight hours of operation. Lubricate the center portion of the driveline on a yearly basis. The first lube maintenance should be done in the first 16 to 24 hours of operation. Then follow a regular schedule of lubing.

Lube Recommendation: Lube cross and bearing every 8 hours of use. Lube telescoping members yearly.



NOTICE:
Replacement parts are not lubricated. When you receive these parts in, make sure to lubricate and tighten screws.

Mechanical Chain Drive: Keep drive chain tension adjusted to about ¼” deflection by loosening the four bolts on the lower bearing, then retightening. Oil the chain frequently enough to keep a film of oil on the chain. This must be done through the maintenance portal. Replace shield after maintenance.

Universal Joint: Remove PTO guard cover and lubricate grease fitting in the U-Joint every eight hours of use. Check PTO retain bolt and retighten if necessary.

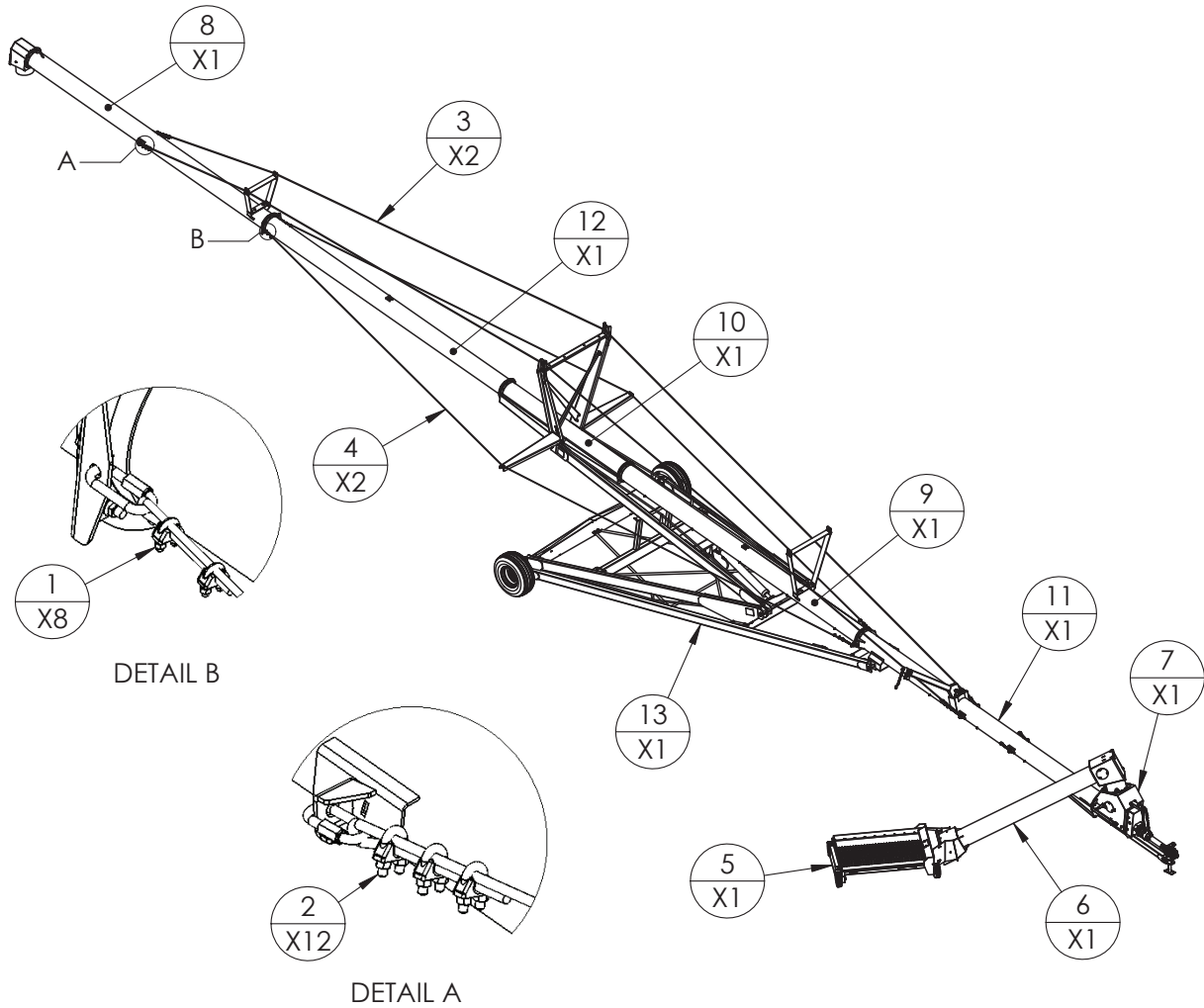
6.2 Storage of Auger

Make sure that auger is in the full down position. Remove all residual material from the hopper and auger tubes. Touch up all scratches on the auger to prevent rusting.

Clean and re-lubricate spline on the PTO driveline. Cover with plastic bag to protect from weather, and place it in the transport latch.

Move auger to your storage area, park, and chock wheels.

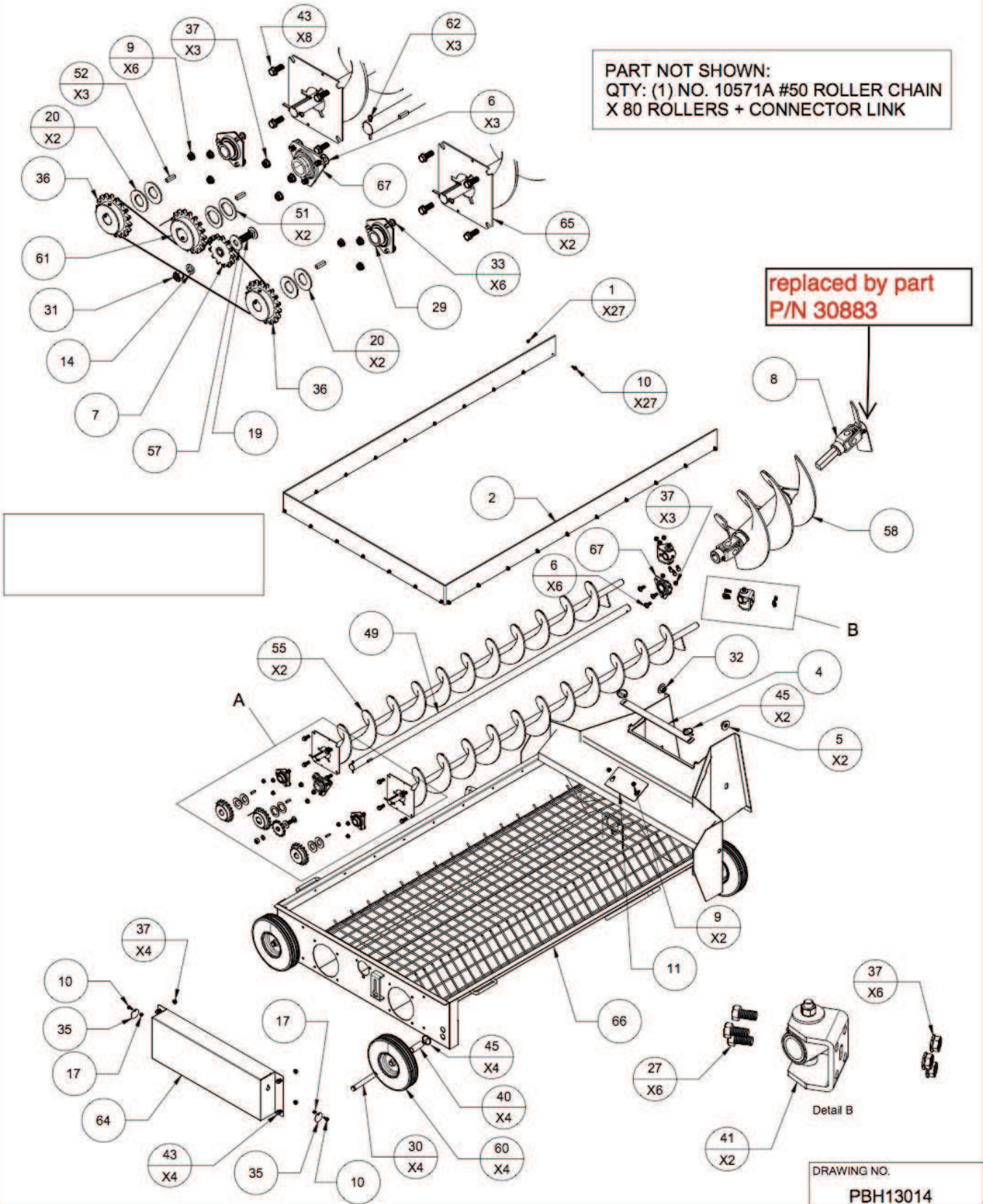
Before using the auger after storage, replace any damaged parts or decals, remove plastic bag from PTO driveline and re-lubricate, and conduct general maintenance procedure.



ITEM NO.	PART NO.	DESCRIPTION	QTY
1	10303	CLAMP, 3/8" CABLE, ZINC	8
2	10367	CLAMP, CABLE, 1/2" ZINC PLATED	12
3	11957	CABLE, TRUSS, MEDIUM, 1/2" X 71FT	2
4	11958	CABLE, TRUSS, SIDE, 3/8 X 52FT	2
5	PBH13014	HOPPER ASM, SWING, H13XX	1
6	PBH13015	SWING TUBE ASM, H13XX	1
7	PBH13026	INFEED HOUSING ASM, H1392, H13102, & H13112	1
8	PBH13032	TUBE ASM, DISCHARGE, H13112	1
9	PBH13036	TUBE ASM, 2ND SECTION, H13112	1
10	PBH13037	TUBE ASM, 3RD SECTION, 10FT TUBE, H13112	1
11	PBH13038	TUBE ASM, 1ST SECTION, H13112	1
12	PBH13039	TUBE ASM, 4TH SECTION, H13112	1
13	PBH13043	CARRIAGE ASM, H13112	1

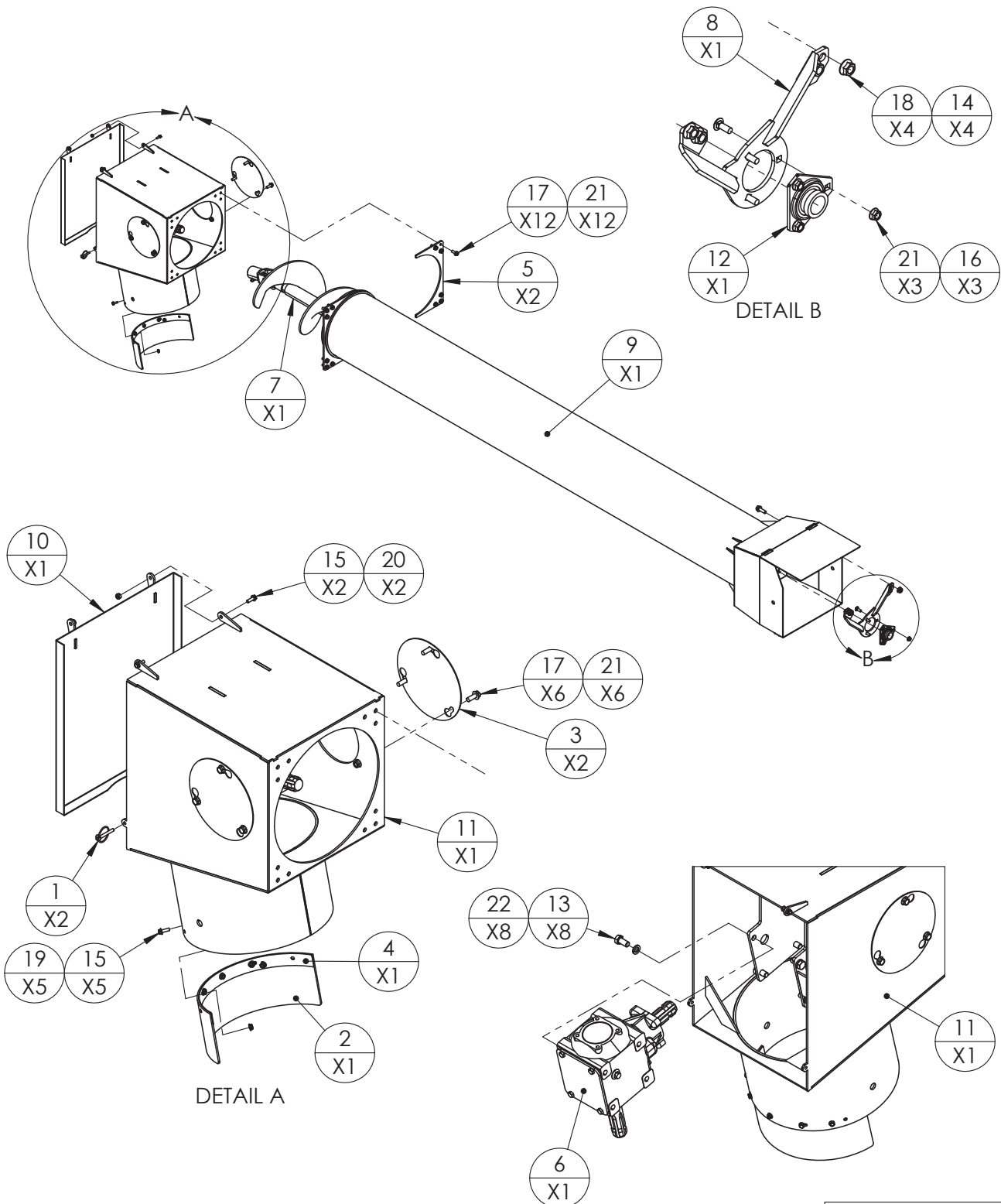
DRAWING NO.
PBH1392

REV	AUGER MODEL(S)	PART/ASSEMBLY DESCRIPTION
	H1362, H1372, H1382	HOPPER ASSEMBLY



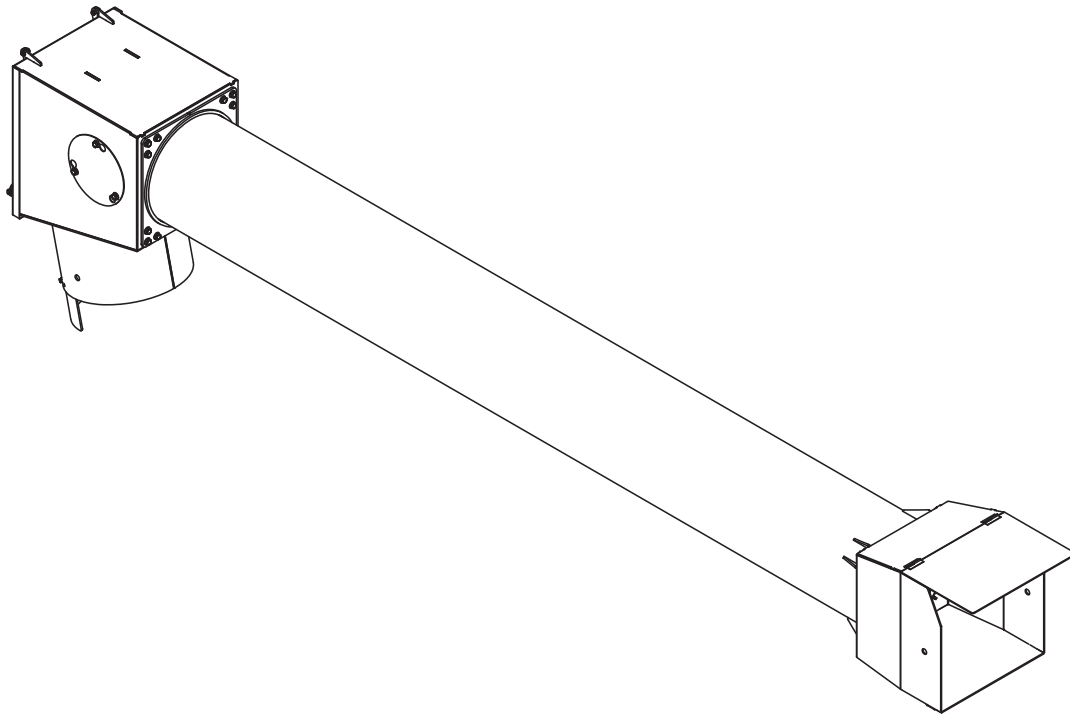
67	30554 1 1-4 3 BOLT	2	1.25" 3 BOLT FLANGETEE WITH BEARING, STANDARD HOLE PATTERN
66	30442	1	SWING HOPPER WELDMENT, H13XX
65	10041	2	PLATE, BEARING MOUNT, SWING HOPPER
64	10516A	1	GUARD, SWING HOPPER DRIVE CHAIN
62	10308	3	PIN, COTTER, 3/16x1.5"
61	10565	1	SPROCKET, #50 x 18 TOOTH x 1.25" BORE, WITH (2) HOLO-CHROME SET SCREWS
60	30104	4	TIRE & RIM ASSY, 10x4.10/3.50-4, SWING HOPPER
58	30425	1	INTERMEDIATE AUGER ASSEMBLY, SWING HOPPER, H13XX
57	FLW-RGLR_~500	1	1/2" STANDARD FLAT WASHER, ZINC
55	30422	2	DRAG AUGER ASSEMBLY, H13XX
52	10307	4	KEY, 1/4 x 1.00"
51	10595	2	WASHER, SPACER SPROCKET/COTTER PIN DRAG AUGER, H10XX
49	30472	1	SHAFT ASSEMBLY, SWING HOPPER DRIVE, H13XX
45	10364	6	LYNCH PIN, 1/4" x 2 1/8" OVERALL LENGTH
43	HEX HD FLG_~375-16 UNC 1.SIMP	12	BOLT, 3/8-16UNC X 1", HEX, FLANGE, GRD 5, ZINC
41	30452D	2	BUSHING ASSEMBLY, DRAG AUGER, H13XX
40	10186	4	SPACER TUBE, SWING HOPPER WHEEL
37	NUT HEX FLG_~375-16 UNC_SIMP	16	NUT, 3/8-16UNC, HEX, FLANGE, GRD 5, ZINC
36	10730	2	SPROCKET, #50 x 18 TOOTH x 1" INCH BORE, (2) HOLLOW CHROME SET SCREWS
35	10139	2	TAB, CHAIN GUARD LUBE HOLE COVER
33	3125 x 75 CARRIAGE BOLT	6	BOLT, 5/16-UNC X 3/4", CARRIAGE, ZINC
32	HEX NUT_~625-11 UNC_TOPLOCK	2	NUT, TOPLOCK, 5/8-11UNC, HEX, ZINC
31	HEX NUT_~500-13 UNC_SIMP	1	NUT, 1/2-13UNC, HEX, GRD 5, ZINC
30	10255	4	PIN, SWING HOPPER WHEEL SUPPORT
29	30550	2	1" 3 BOLT FLANGE WITH FAFNIR BEARING
27	HEX BOLT_~375-16 UNC_0~75_SIMP	6	3/8-16UNC x 3/4" HEX BOLT, GRD 5, ZINC
20	10399	4	WASHER, SPACER SPROCKET/COTTER PIN DRAG AUGER, H10XX
19	1-2 x 1 1-2 CARRIAGE BOLT	1	1/2-13UNC x 1-1/2" CARRIAGE BOLT, GRD 5, ZINC
17	HEX NUT_~250-20 UNC NYLOCK_SIMP	2	1/4-20UNC, HEX NYLOCK NUT, ZINC
14	LK WSHR-HLCL SPR-RGLR_~500	1	WASHER, LOCK, 1/2" SPLIT SPRING
11	10589	1	LID, SWING HOPPER TRANSITION ACCESS, H13XX
10	HEX HD FLG_~250-20 UNC_~75_SIMP	29	BOLT, 1/4-20UNC X 3/4" HEX FLANGE, GRD 5 ZINC
9	NUT HEX FLG_~3125-18 UNC_SIMP	8	5/16-18UNC, HEX FLANGE NUT
8	30434 30883	1	PADDLE / KNUCKLE ASSEMBLY H13XX, MID AUGER
7	10563	1	SPROCKET, IDLER #50 x 13 TEETH, 1/2" BORE
6	3-8 x 1 CARRIAGE BOLT	6	BOLT, 3/8-16UNC x 1" CARRIAGE, GRD 5, ZINC
5	FLW-RGLR_~625	2	WASHER, 5/8", FLAT, ZINC
4	10562	1	PLATE, SWING HOPPER ACCESS DOOR HOLD DOWN
2	10116	1	RUBBER, OVERFLOW FOR SWING HOPPER
1	NUT HEX FLG_~250-20 UNC_SIMP	27	NUT, 1/4-20UNC, HEX FLANGE, GRD 5 ZINC
Item Number	Part Number	Quantity	Description

REV	AUGER MODEL(S)	PART/ASSEMBLY DESCRIPTION
	H13XX	SWING TUBE ASSEMBLY



DRAWING NO.
PBH13015

REV	AUGER MODEL(S) H13XX	PART/ASSEMBLY DESCRIPTION SWING TUBE ASSEMBLY
-----	-------------------------	--



ITEM NO.	PART NO.	DESCRIPTION	QTY
1	10364	LYNCH PIN, 1/4" X 2-1/8"	2
2	10477A	DEFLECTOR, RUBBER, HOPPER DISCHARGE, H13XX	1
3	10528	COVER PLATE, CLEAN OUT	2
4	11126	STIFFENER, RUBBER SWING DISCHARGE, H13	1
5	11790	PLATE, SWING TUBE RETAIN, H13XX	2
6	30176	GEARBOX, RIGHT ANGLE	1
7	30438A	FLIGHTING ASSY, SWING HOPPER, H13XX	1
8	30443A	BRACKET, HANGER BEARING SUPPORT, H13XX	1
9	30475B	TUBE WELDMENT, SWING HOPPER, H13XX	1
10	30482	LID ASSY, SWING HOPPER, H13XX	1
11	30484A	HOUSING, SWING TUBE DISCHARGE, 13" BOLT ON	1
12	30557	1.25" 3 BOLT FLANGETEE W/BEARING	1
13	40002	BOLT, 1/2-13UNC X 1" HEX, GRD 5, ZINC	8
14	40005	BOLT, 1/2-13UNC X 1-1/2" HEX FLANGE, GRD 5, ZINC	4
15	40014	BOLT, 1/4-20UNC X 3/4" HEX FLANGE, GRD 5, ZINC	7
16	40024	BOLT, 3/8-16UNC X 1" CARRIAGE, GRD 5, ZINC	3
17	40025	BOLT, 3/8-16UNC X 1" HEX FLANGE, GRD 5, ZINC	18
18	40047	NUT, 1/2-13UNC, HEX FLANGE, GRD 5, ZINC	4
19	40049	NUT, 1/4-20UNC, HEX FLANGE, GRD 5, ZINC	5
20	40051	NUT, 1/4-20UNC, HEX, NYLOCK, ZINC	2
21	40056	NUT, 3/8-16UNC, HEX FLANGE, GRD 5, ZINC	21
22	40072	WASHER, LOCK, 1/2" SPLIT, ZINC	8

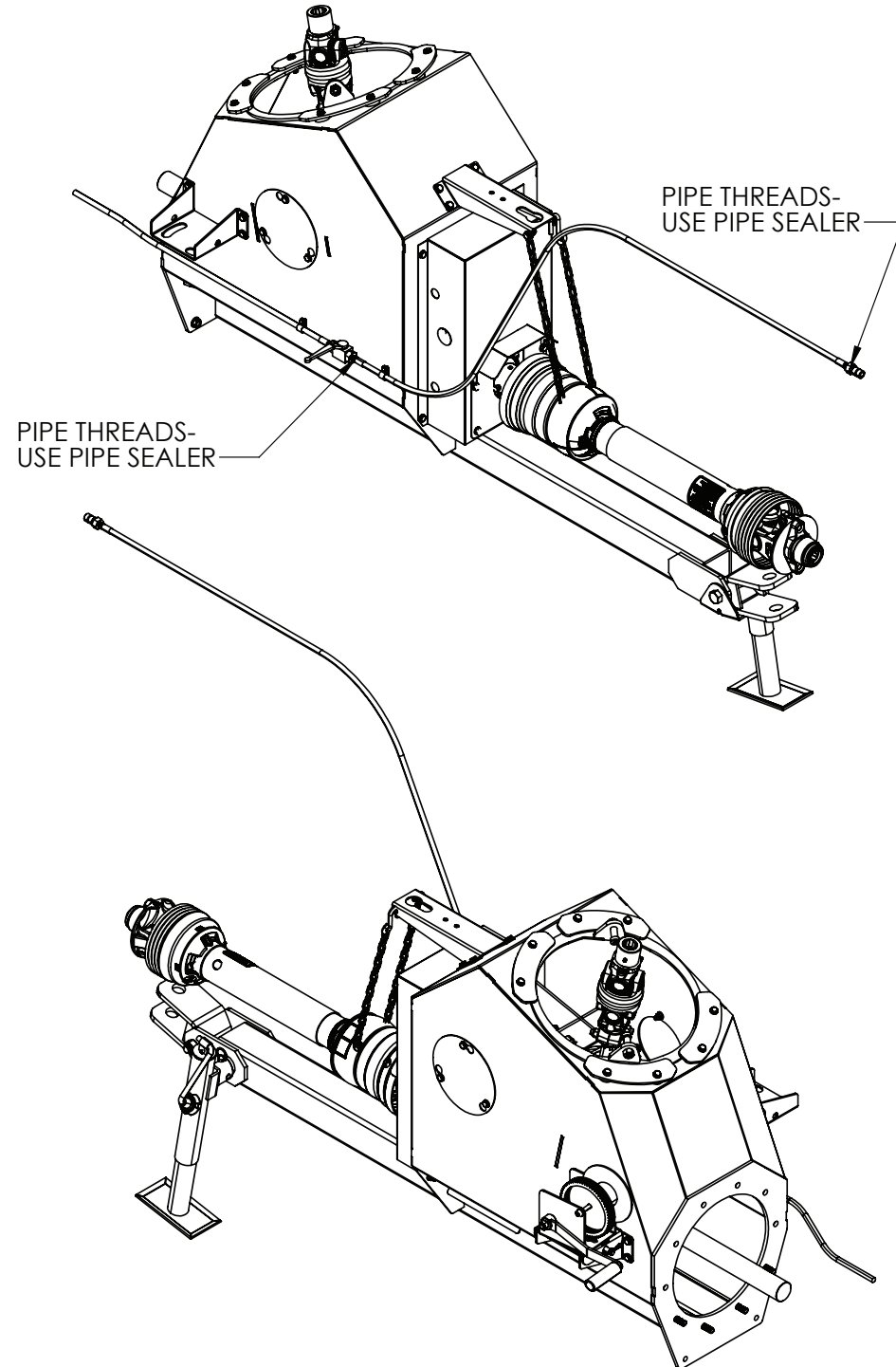
DRAWING NO.
PBH13015

REV

AUGER MODEL(S)
H1392, H13102

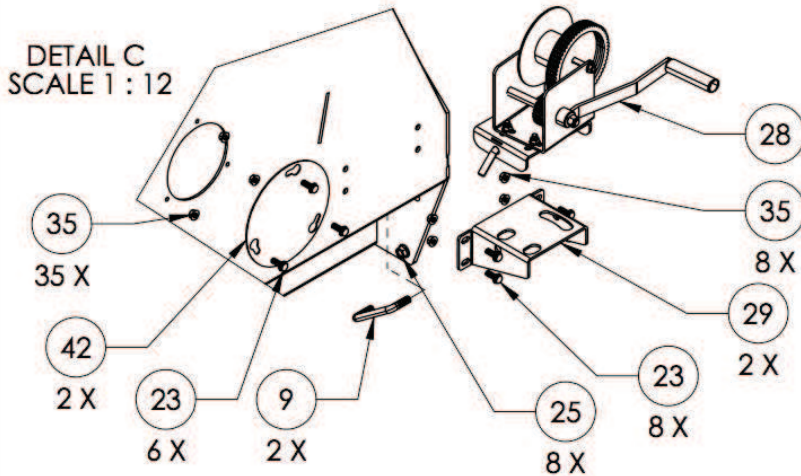
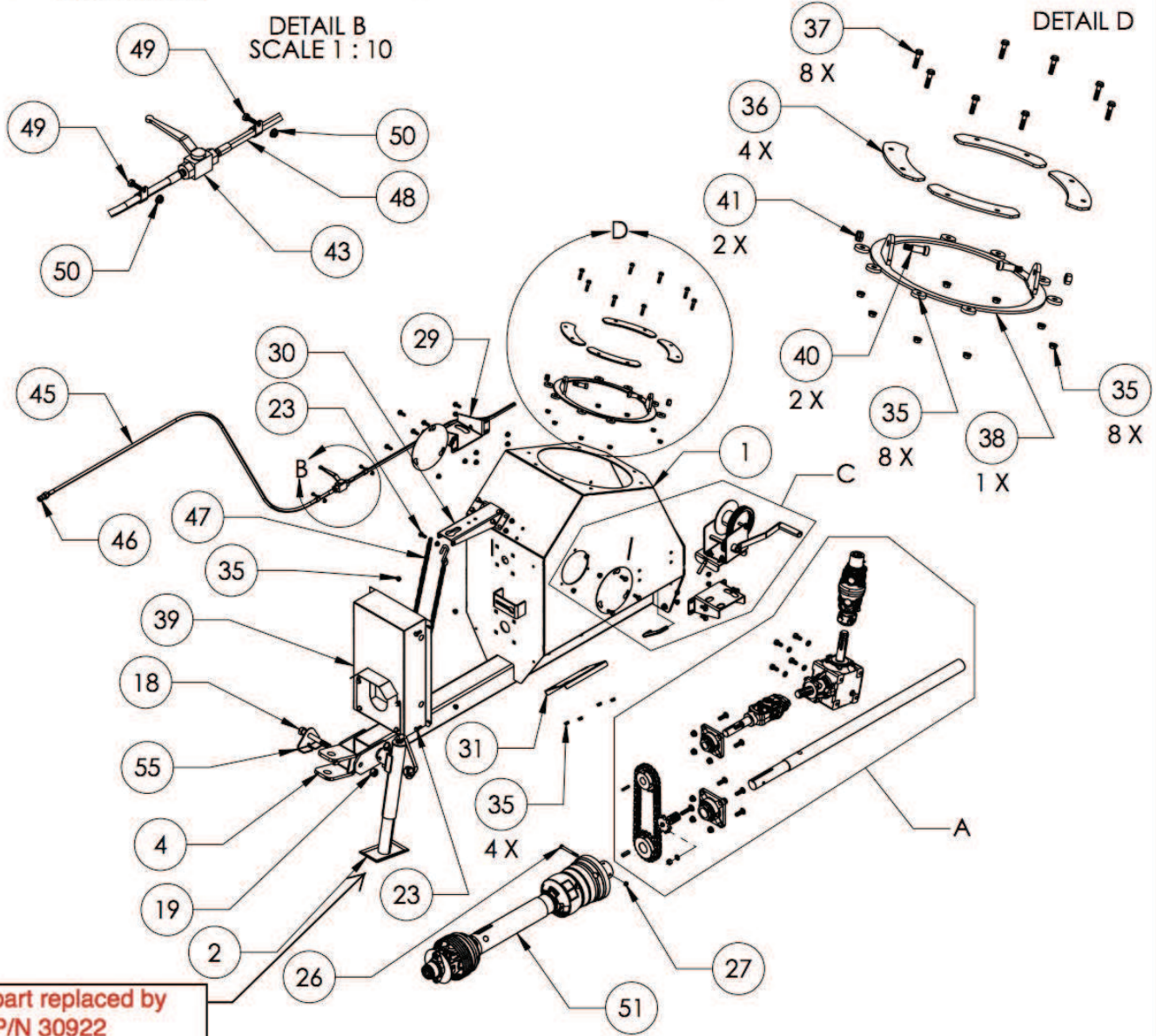
PART/ASSEMBLY DESCRIPTION

INFEED HOUSING ASSEMBLY



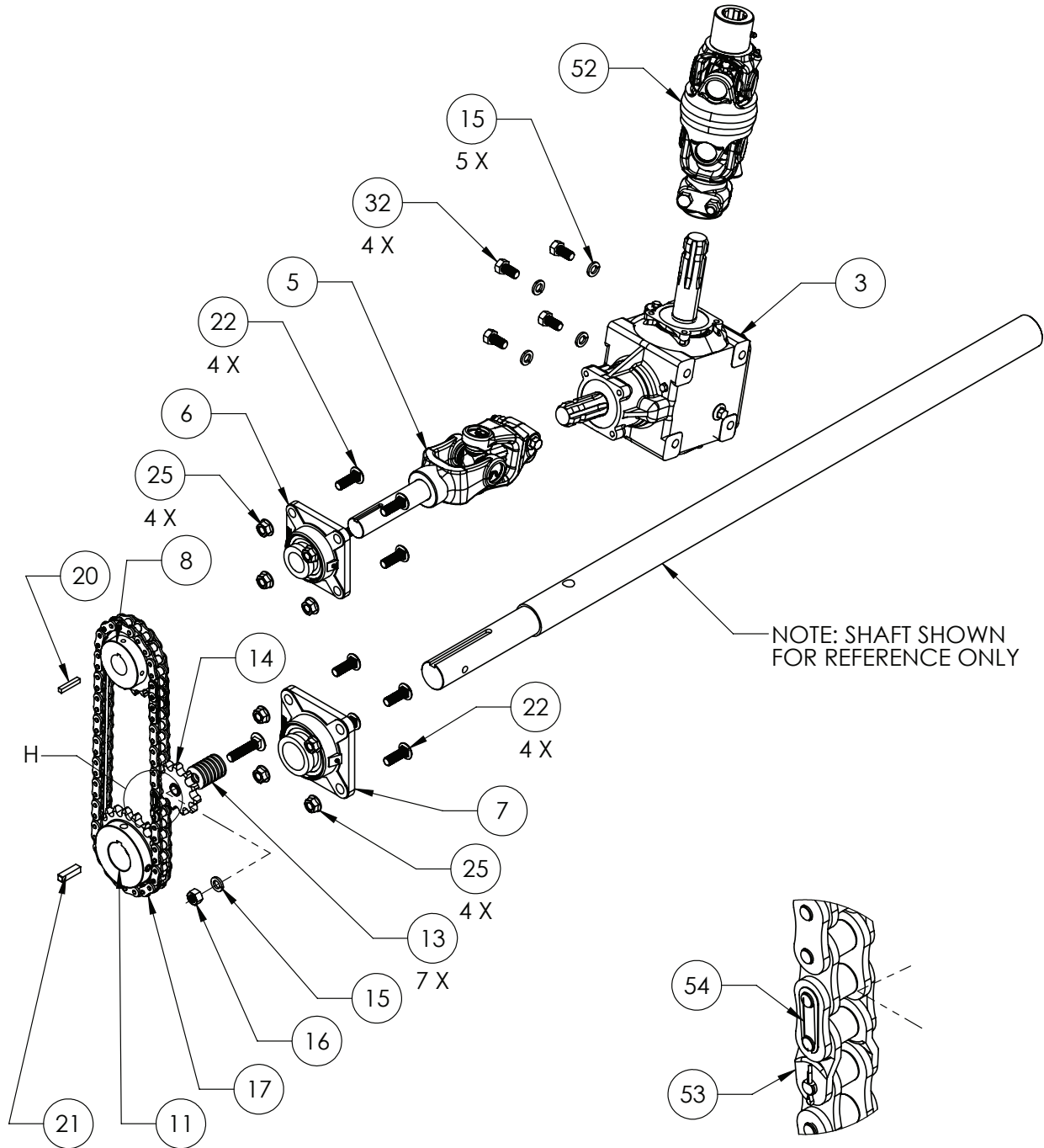
DRAWING NO.
PBH13026

REV	AUGER MODEL(S)	PART/ASSEMBLY DESCRIPTION
	H1392, H13102	INFEED HOUSING ASSEMBLY



DRAWING NO.
PBH13026

REV	AUGER MODEL(S)	PART/ASSEMBLY DESCRIPTION
	H1392, H13102	INFEED HOUSING ASSEMBLY



DETAIL A
SCALE 1 : 8

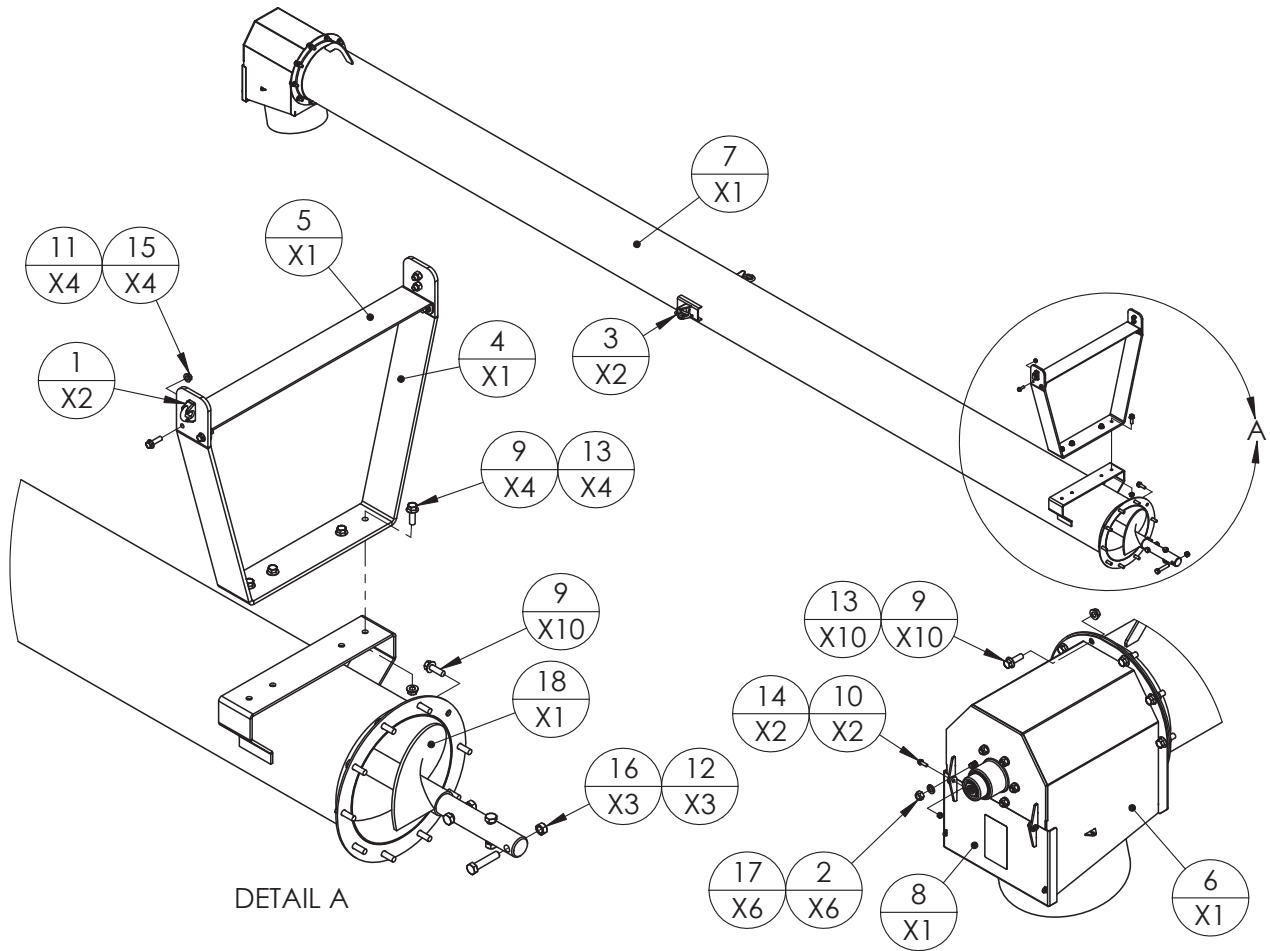
DETAIL H
SCALE 1 : 2

REV	AUGER MODEL(S) H1392, H13102	PART/ASSEMBLY DESCRIPTION INFEED HOUSING ASSY
-----	---------------------------------	--

ITEM NO.	PART NO.	DESCRIPTION	QTY
1	30805	HOUSING, INFEED, H1392&102	1
2	30140	JACK. 5000LB TOP WIND	1
3	30176	GEARBOX, RIGHT ANGLE	1
4	30424A	CLEVIS ASSEMBLY, H13XX	1
5	30480A	KNUCKLE/SHAFT ASSY, SPLIT KNUCKLE,	1
6	30552	BEARING, 1-1/4", 4 BOLT CAST, ECCENTRIC LOCK COLLAR	1
7	30555skf	BEARING & CAST HOUSING ASSY, 1-3/4", 4-BOLT	1
8	11052	SPROCKET, #60 X 18 TOOTH, 1-1/4" BORE, W/SET SCREWS	1
9	11022	U-BOLT, INFEED HOUSING RETAIN, H13XX	2
10	10536B	SHAFT, INFEED FLIGHTING DRIVE	1
11	10555	SPROCKET, #60 X 20 TOOTH, 1-3/4" BORE, W/SET SCREWS	1
12	40007	BOLT, 1/2-13UNC X 2", CARRIAGE, GRD 5, ZINC	1
13	40066	WASHER, FLAT, 1/2", ZINC	7
14	10300	SPROCKET, IDLER, 11 TOOTH, 1/2" BORE	1
15	40072	WASHER, LOCK, 1-2" SPLIT, ZINC	5
16	40046	NUT, 1/2-13UNC, HEX, GRD 5, ZINC	1
17	10552A	CHAIN, #60H X 56 ROLLERS	1
18	40022	BOLT, 3/4-10UNC X 6", HEX, GRD 5, ZINC	1
19	40055	NUT, 3/4-10UNC, HEX TOPLOCK, ZINC	1
20	10309	KEY, 1/4 X 1-1/2", SQUARE	1
21	10578	KEY, 3/8 X 1-1/2" SQUARE	1
22	40003	BOLT, 1/2-13UNC X 1-1/2", SHORT NECK CARRIAGE, GRD 5, ZINC	8
23	40025	BOLT, 3/8-16UNC X 1", HEX FLANGE, GRD 5, ZINC	23
35	40056	NUT, 3/8-16UNC, HEX FLANGE, GRD 5, ZINC	35
25	40047	NUT, 1/2-13UNC, HEX FLANGE, GRD 5, ZINC	16
26	40032	BOLT, 3/8-16UNC X 3-1/2" HEX, GRD 5, ZINC	1
27	40058	NUT, 3/8-16UNC, HEX, TOPLOCK, ZINC	1
28	PB10001	WINCH & MOUNT BRACKET ASSEMBLY	1
29	10131B	BRACKET, WINCH MOUNT, BOLT ON	2
30	10526A	BRACKET, TPO SHAFT SUPPORT, H13, SERIAL #1234 & NEWER	1
31	10101A	COVER PLATE, CLEAN OUT, INFEED HOUSING	1
32	40002	BOLT, 1-2-13UNC X 1", HEX, GRD 5, ZINC	4
33	40069	WASHER, 5/16", SPLIT LOCK, ZINC	4
34	40040	BOLT, 5/16-18UNC X 3/4" HEX, GRD 5, ZINC	4
35	10185	SPACER, SWING HOPPER HOLD DOWN	8
36	10508C	PLATE, SWING HOPPER HOLD DOWN	4
37	40034	BOLT, 3/8-16UNC X 1-1/2" HEX FLANGE, GRD 5, ZINC	8
38	30407A	RING ASSY, SWING HOPPER PIVOT, H13XX	1
39	PBH13013	GUARD ASSY, INFEED DRIVE CHAIN, H13XX SERIAL #1234 & NEW	1
40	10370	BOLT, SHOULDER, 1/2-13UNC X .625" DIA X 1" SHOULDER	2
41	40048	NUT, 1/2-13UNC, HEX TOPLOCK, ZINC	2
42	10528	COVER PLATE, CLEAN OUT	2
43	30479	VALVE, BALL, 1/4 TURN, 3/8" NPT BOTH SIDES	1
44	10588A	5/8", OD CLAMP, GALV. VINYL, HYD HOSE RETAIN	2
45	30794-03	HOSE, 3/8" X 96", 3/8" NPT MALE X 1/2" NPT MALE, (PART OF 30794)	1
46	10324	COUPLER, 1/2 NPT, MALE TIP, 1/2" BODY, (PIONEER)	1
47	30476	CHAIN, PTO SUPPORT H13, (38 LINKS + HOOK)	1
48	30794-02	HOSE, 3/8" X 62.5FT, #8 FEMALE JIC X 3/8" NPT	1
49	40015	BOLT, 1/4-20UNC X 3/4" HEX FLANGE, ZINC	2
50	40049	NUT, 1/4-20UNC, HEX FLANGE, GRD 5, ZINC	2
51	30440	PTO SHAFT, CAT 6, H13XX	1
52	30439	KNUCKLE ASSY, CV, H13XX SWING HOPPER DRIVE	1
53	10822	LINK, #60H OFFSET, (1/2 LINK)	1
54	10553	LINK, #60 HEAVY, CONNECTOR	1
55	11234	BRACKET, CLEVIS POSITION RETAIN, H13	1

DRAWING NO.
PBH13026

REV	AUGER MODEL(S) H1392 & H13112	PART/ASSEMBLY DESCRIPTION TUBE ASM, DISCHARGE, H1392 & H13112
-----	----------------------------------	--

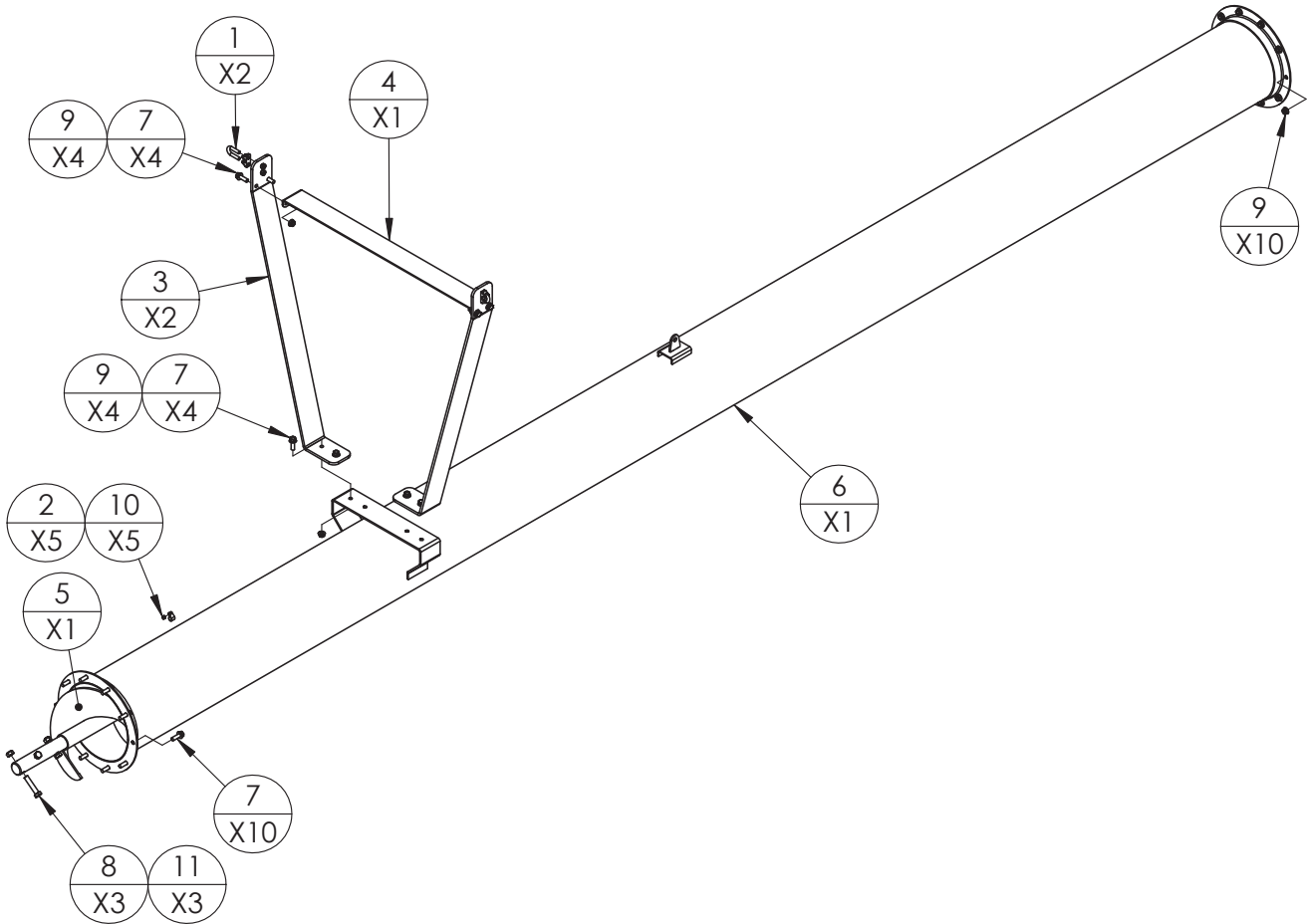


DETAIL A

ITEM NO.	PART NO.	DESCRIPTION	QTY
1	10367	CLAMP, CABLE, 1/2" ZINC PLATED	2
2	10434	NUT, 1/2-20, 60 DEGREE LUG NUT, ZINC	6
3	10579	QUICKLINK CHAIN CONNECTOR, 1/2 INCH	2
4	11806	TRUSS, CABLE, SMALL, H1392 & 102	1
5	11893	TRUSS, CROSS, SMALL, HC13102	1
6	30419	DISCHARGE HOUSING ASSY, H13	1
7	30778A	TUBE ASM, DISCHARGE, H13112	1
8	31047	LID ASM, DISCHARGE HOUSING, H13XX	1
9	40005	BOLT, 1/2-13UNC X 1-1/2" HEX FLANGE, GRD 5, ZINC	24
10	40014	BOLT, 1/4-20UNC X 3/4" HEX FLANGE, GRD 5, ZINC	2
11	40027	BOLT, 3/8-16UNC X 1-1/4" HEX FLANGE, GRD 5, ZINC	4
12	40043	BOLT, 5/8-11UNC X 3" HEX, GR5, ZINC	3
13	40047	NUT, 1/2-13UNC, HEX FLANGE, GRD 5, ZINC	14
14	40051	NUT, 1/4-20UNC, HEX, NYLOCK, ZINC	2
15	40056	NUT, 3/8-16UNC, HEX FLANGE, GRD 5, ZINC	4
16	40062	NUT, 5/8-11UNC, HEX, TOPLOCK, ZINC	3
17	40072	WASHER, LOCK, 1/2" SPLIT, ZINC	6
18	PBH13018	FLIGHTING ASM, DISCHARGE	1

DRAWING NO.
PBH13032

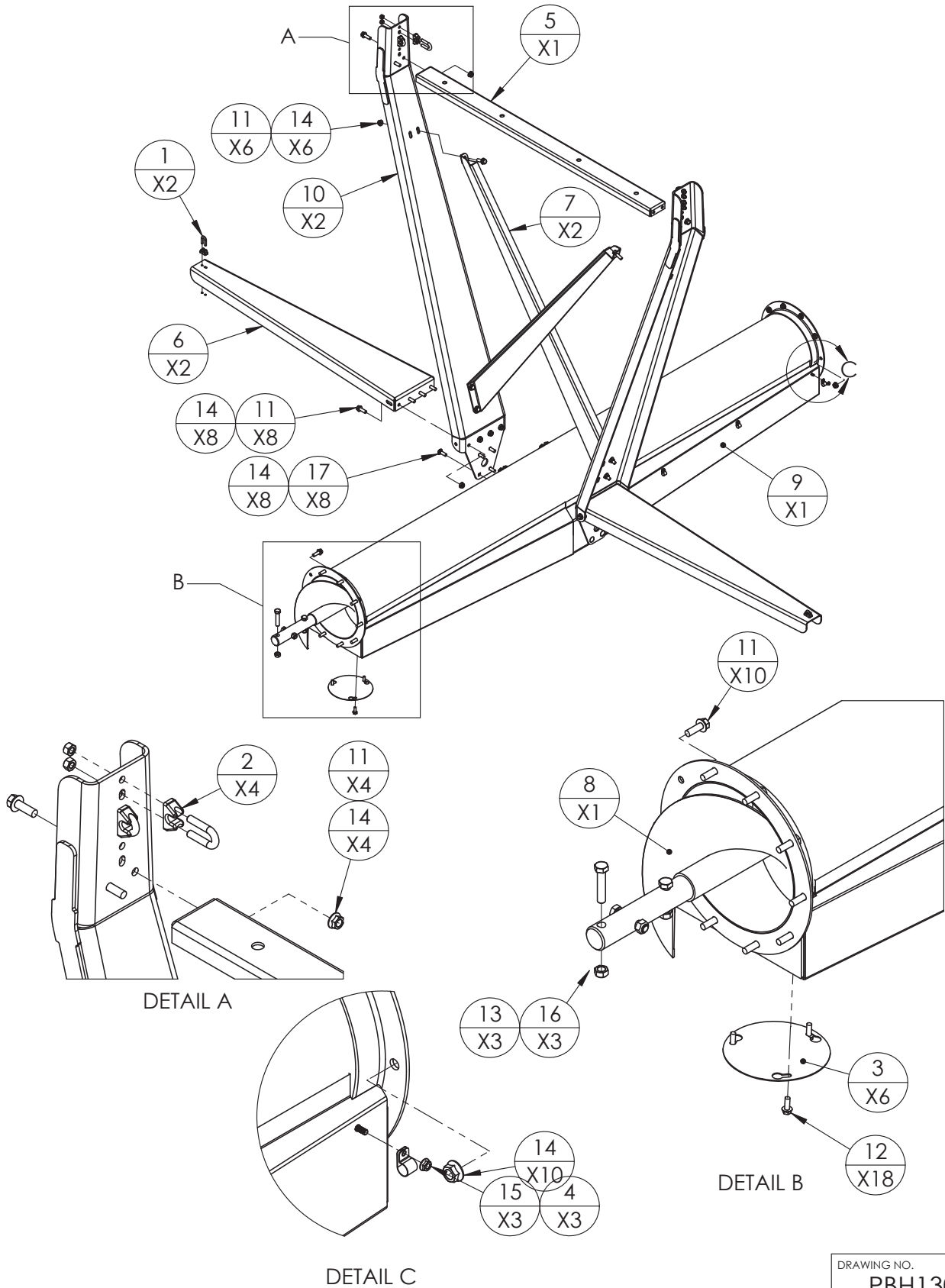
REV	AUGER MODEL(S) H1392, H13102, & H13112	PART/ASSEMBLY DESCRIPTION TUBE ASM, 2ND SECTION
-----	---	--



ITEM NO.	PART NO.	DESCRIPTION	QTY
1	10367	CLAMP, CABLE, 1/2" ZINC PLATED	2
2	10588A	5/8", OD CLAMP, GALV. VINYL, HYD HOSE RETAIN	5
3	11807	TRUSS, CABLE, MEDIUM, H1392 & 102	2
4	11808	TRUSS, CROSS, MEDIUM, H1392 & 102	1
5	30430	FLIGHTING SECTION ASM, REGULAR, H13XX	1
6	30775A	TUBE ASSEMBLY, 2ND FROM INFEED, H13112	1
7	40005	BOLT, 1/2-13UNC X 1-1/2" HEX FLANGE, GRD 5, ZINC	18
8	40043	BOLT, 5/8-11UNC X 3" HEX, GR5, ZINC	3
9	40047	NUT, 1/2-13UNC, HEX FLANGE, GRD 5, ZINC	18
10	40050	NUT, 1/4-20UNC, HEX, GRD 5, ZINC	5
11	40062	NUT, 5/8-11UNC, HEX, TOPLOCK, ZINC	3

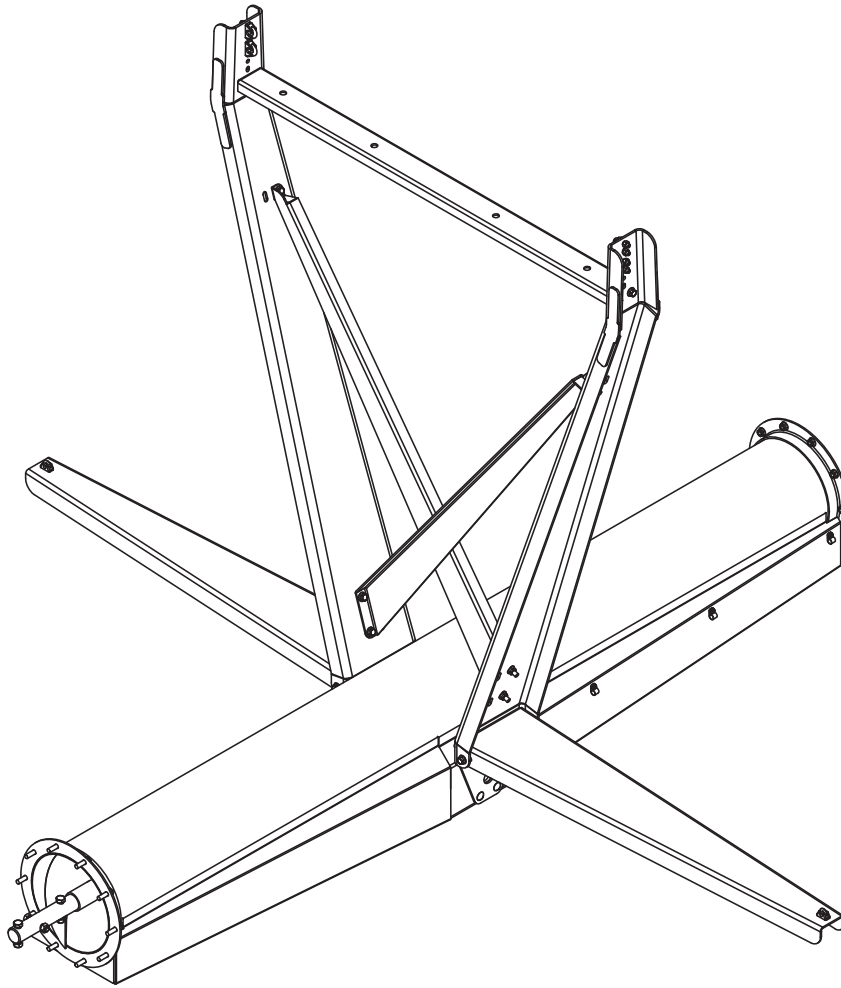
DRAWING NO.
PBH13036

REV	AUGER MODEL(S) H1392, H13102, & H13112	PART/ASSEMBLY DESCRIPTION TUBE ASM, 3RD SECTION, 10FT TUBE
-----	---	---



DRAWING NO.
PBH13037

REV	AUGER MODEL(S) H1392, H13102, & H13112	PART/ASSEMBLY DESCRIPTION TUBE ASM, 3RD SECTION, 10FT TUBE
-----	---	---



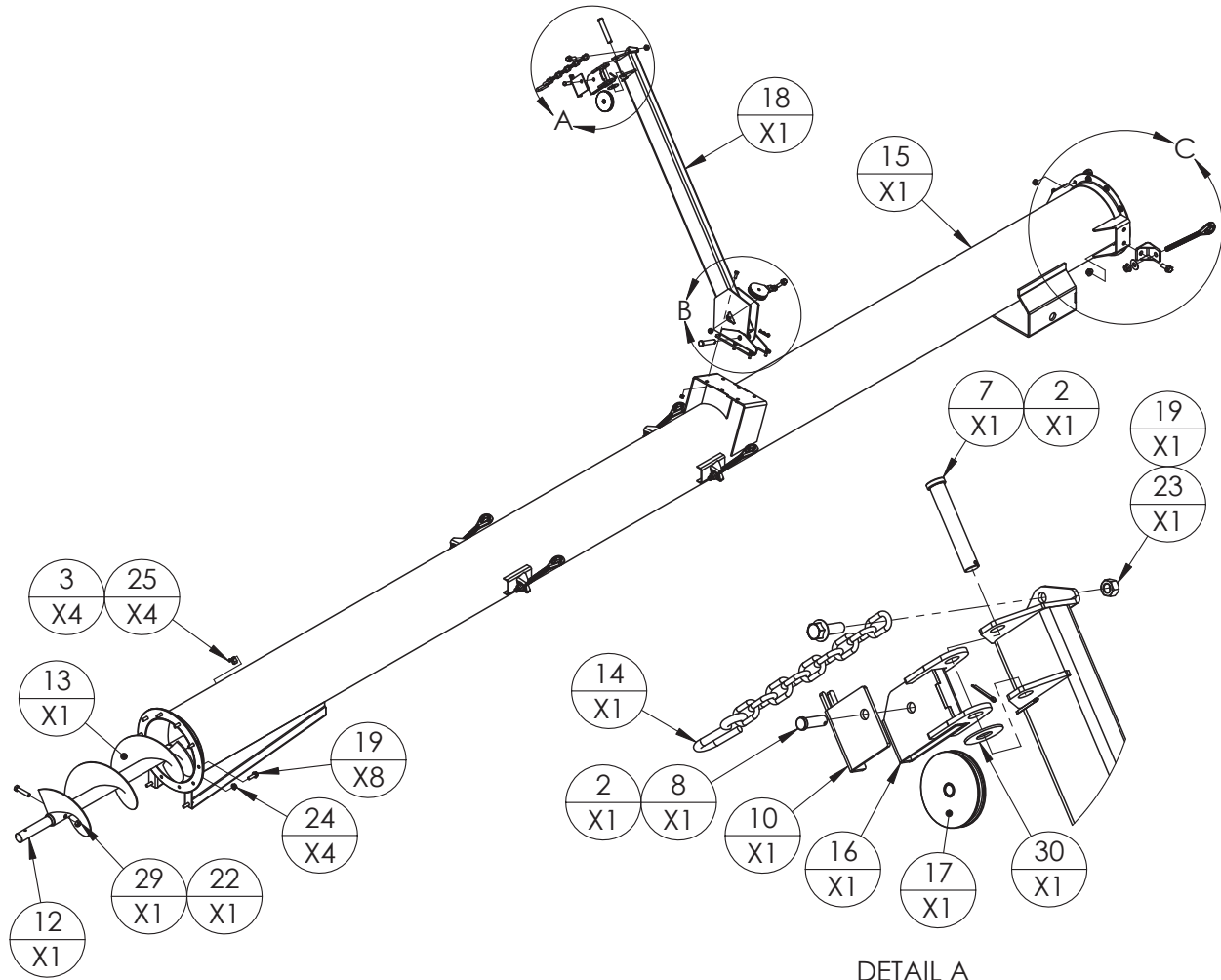
ITEM NO.	PART NO.	DESCRIPTION	QTY
1	10303	CLAMP, 3/8" CABLE, ZINC	2
2	10367	CLAMP, CABLE, 1/2" ZINC PLATED	4
3	10528	COVER PLATE, CLEAN OUT	6
4	10588A	5/8", OD CLAMP, GALV. VINYL, HYD HOSE RETAIN	3
5	11809	TRUSS, CROSS, MEDIUM, H1392 & 102	1
6	11920	CABLE SUPPORT, SIDE, H13112 & HC13112	2
7	11928	BRACKET, X-BRACE, CENTER, H13112	2
8	30797	FLIGHTING ASSY, 120" SECTION, H1392	1
9	31067	TUBE ASM, 3RD SECTION, 10FT TUBE, H13112	1
10	31071	WELDMENT, TRUSS, UPRIGHT, H13112 & HC13112	2
11	40005	BOLT, 1/2-13UNC X 1-1/2" HEX FLANGE, GRD 5, ZINC	32
12	40025	BOLT, 3/8-16UNC X 1" HEX FLANGE, GRD 5, ZINC	18
13	40043	BOLT, 5/8-11UNC X 3" HEX, GR5, ZINC	3
14	40047	NUT, 1/2-13UNC, HEX FLANGE, GRD 5, ZINC	40
15	40049	NUT, 1/4-20UNC, HEX FLANGE, GRD 5, ZINC	3
16	40062	NUT, 5/8-11UNC, HEX, TOPLOCK, ZINC	3
17	40102	BOLT, 1/2-13UNC X 1-1/2" CARRIAGE, GRD 5, ZINC	8

DRAWING NO.
PBH13037

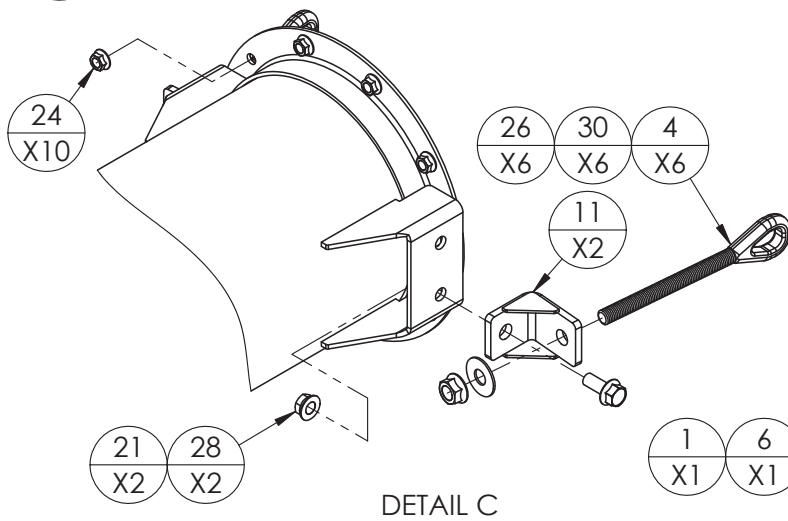
REV

AUGER MODEL(S)
H1392, H13102, & H13112

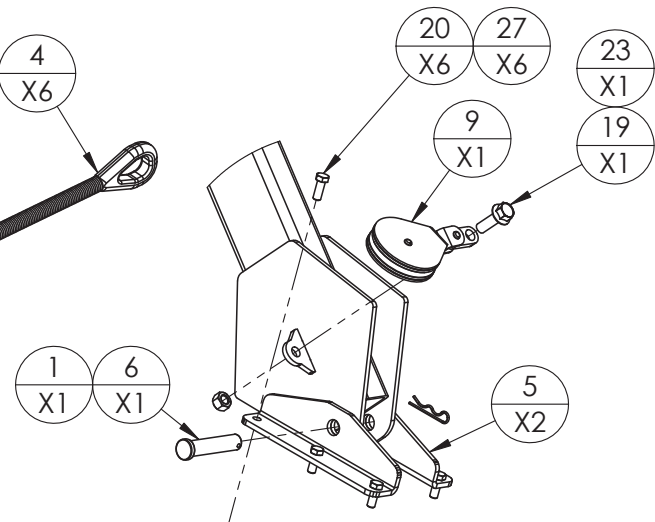
PART/ASSEMBLY DESCRIPTION
TUBE ASM, 1ST SECTION



DETAIL A



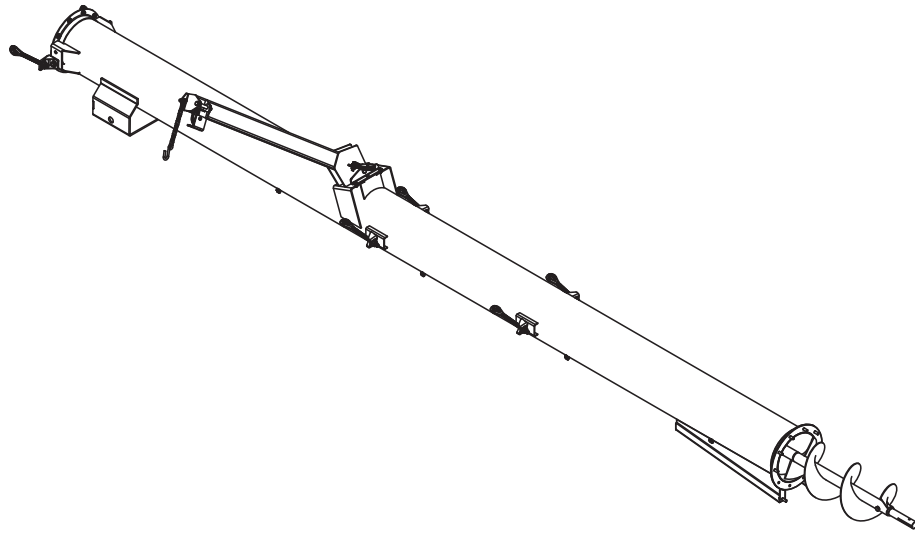
DETAIL C



DETAIL B

DRAWING NO.
PBH13038

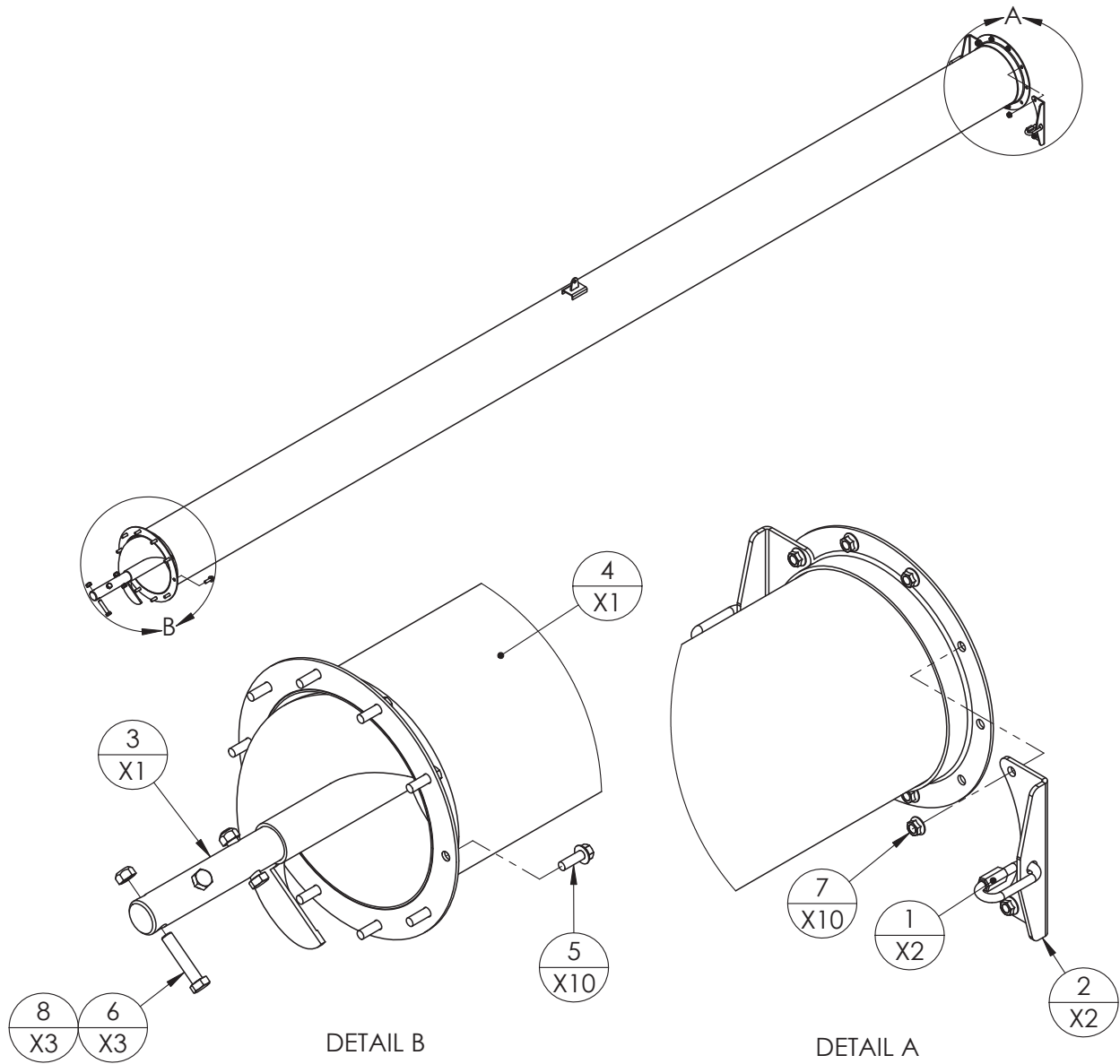
REV	AUGER MODEL(S) H1392, H13102, & H13112	PART/ASSEMBLY DESCRIPTION TUBE ASM, 1ST SECTION
-----	---	--



ITEM NO.	PART NO.	DESCRIPTION	QTY
1	10381	HAIRPIN, .093 X 1.625	1
2	10426	PIN, COTTER, .125"x1.5"	2
3	10588A	5/8", OD CLAMP, GALV. VINYL, HYD HOSE RETAIN	4
4	10652	I-BOLT, FORGED 3/4" RIGHT HAND	6
5	10676	BRACKET, HOPPER TRANSPORT ARM MNT. H13XX	2
6	10970	PIN, CLEVIS, HOPPER TRANSPORT SUPPORT	1
7	11036	PIN, CLEVIS, TRANSPORT PULLEY SUPPORT, INNER	1
8	11038	PIN, CLEVIS, 1/2X1-1/2", PULLEY SUPPORT	1
9	11040	PULLEY, LOWER, SWING HOPPER TRANSPORT SUPPORT	1
10	11716	BRACKET, CABLE ALIGN, H13XX	1
11	30420	BRACKET ASSEMBLY, TRUSS MOUNT, H13XX	2
12	30435	FLIGHTING SECTION ASM, INFEED, H13XX	1
13	30446	FLIGHTING, INFEED STAGE 1, H13XX	1
14	30477	CHAIN, SAFETY, SWING HOPPER SUPPORT, H13XX	1
15	30774A	TUBE ASM, INFEED, HC13102, H13112	1
16	30780	PULLEY HOUSING ASSY, HOPPER TRANSPORT	1
17	30783	PULLEY & BRASS BUSHING ASSY, HOPPER TRANSPORT	1
18	30819	ARM, HOPPER TRANSPORT SUPPORT, H1392&102	1
19	40005	BOLT, 1/2-13UNC X 1-1/2" HEX FLANGE, GRD 5, ZINC	10
20	40026	BOLT, 3/8-16UNC X 1" HEX, GRD 5, ZINC	6
21	40041	BOLT, 5/8-11UNC X 1-1/2" HEX FLANGE, GRD 5, ZINC	2
22	40043	BOLT, 5/8-11UNC X 3" HEX, GR5, ZINC	1
23	40046	NUT, 1/2-13UNC, GRD 5, ZINC	2
24	40047	NUT, 1/2-13UNC, HEX FLANGE, GRD 5, ZINC	14
25	40050	NUT, 1/4-20UNC, HEX, GRD 5, ZINC	4
26	40053	NUT, 3/4-10UNC, HEX FLANGE, GRD 5, ZINC	6
27	40057	NUT, 3/8-16UNC, HEX, GRD 5, ZINC	6
28	40061	NUT, 5/8-11UNC, HEX FLANGE, GRD 5, ZINC	2
29	40062	NUT, 5/8-11UNC, HEX, TOPLOCK, ZINC	1
30	40068	WASHER, FLAT, 3/4", ZINC	7

DRAWING NO.
PBH13038

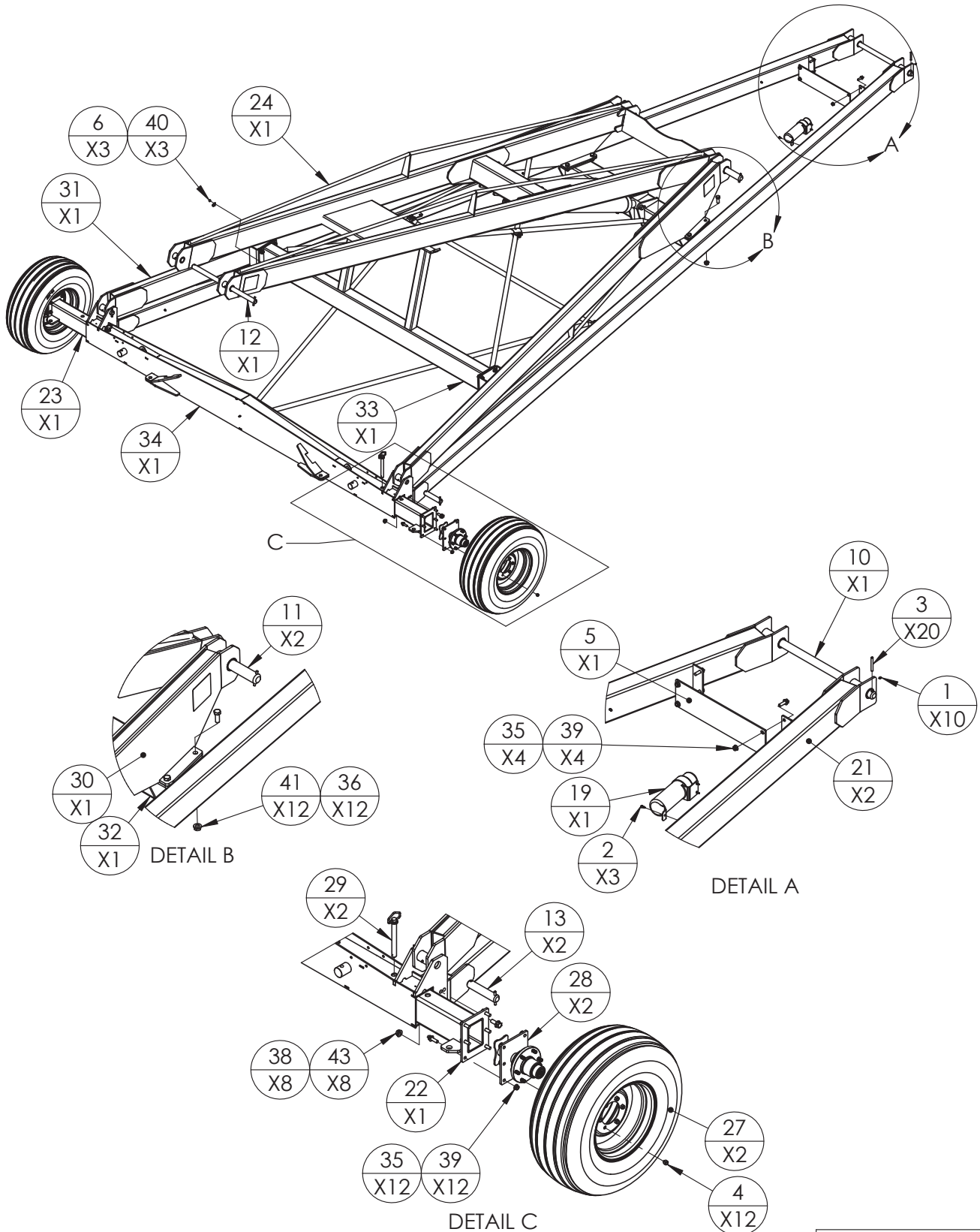
REV	AUGER MODEL(S) H1392, H13102, & H13112	PART/ASSEMBLY DESCRIPTION TUBE ASM, 4TH SECTION
-----	---	--



ITEM NO.	PART NO.	DESCRIPTION	QTY
1	10579	QUICKLINK CHAIN CONNECTOR, 1/2 INCH	2
2	10680	BRACKET, BOLT TRUSS CABLE MOUNT, H13XX	2
3	30430	FLIGHTING SECTION ASM, REGULAR, H13XX	1
4	31074	TUBE ASSEMBLY, 4TH FROM INFEED, H13112	1
5	40005	BOLT, 1/2-13UNC X 1-1/2" HEX FLANGE, GRD 5, ZINC	10
6	40043	BOLT, 5/8-11UNC X 3" HEX, GR5, ZINC	3
7	40047	NUT, 1/2-13UNC, HEX FLANGE, GRD 5, ZINC	10
8	40062	NUT, 5/8-11UNC, HEX, TOPLOCK, ZINC	3

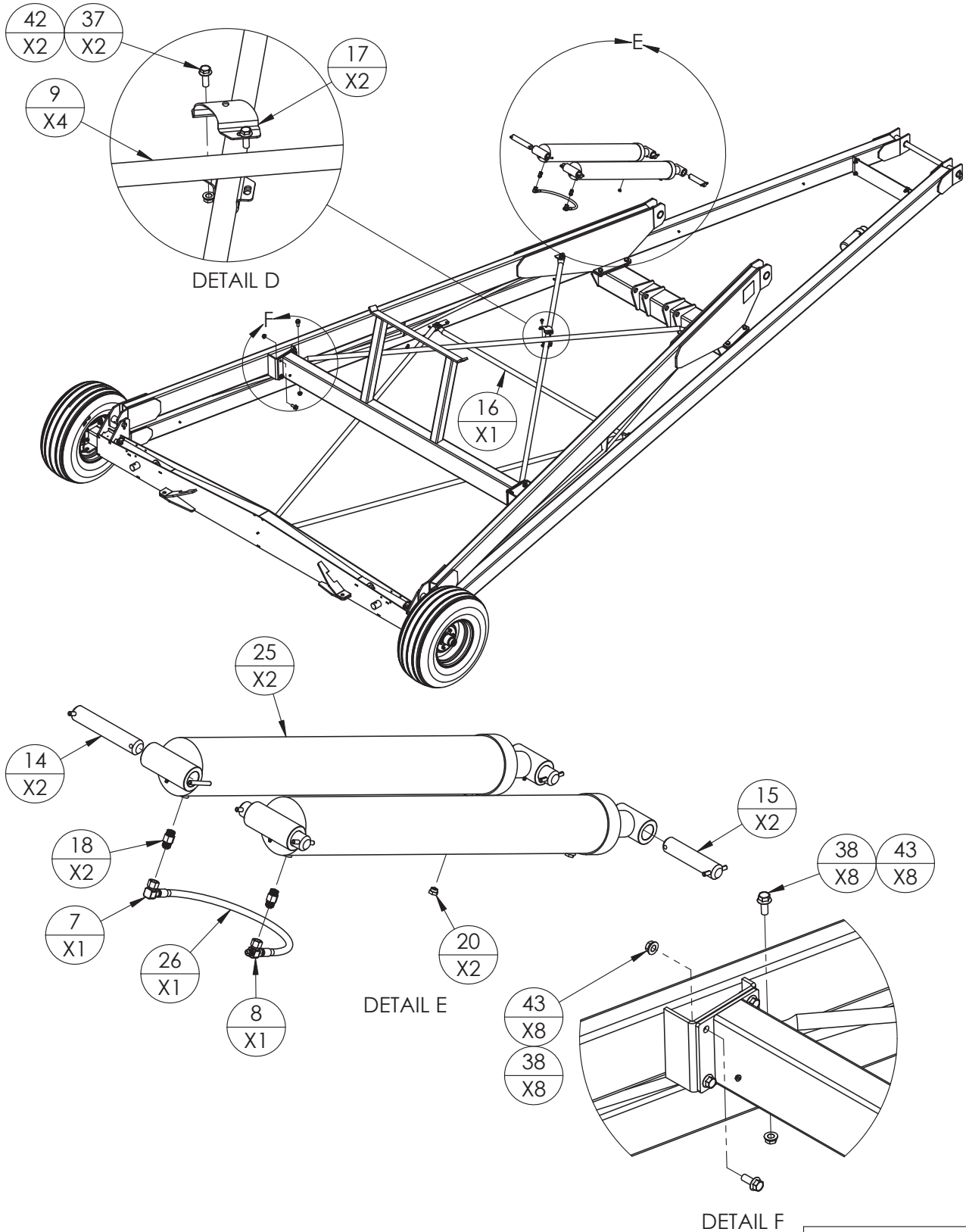
DRAWING NO.
PBH13039

REV	AUGER MODEL(S) H1392, H13102, & H13112	PART/ASSEMBLY DESCRIPTION CARRIAGE ASM, H1392, H13102, & H13112
-----	---	--



DRAWING NO.
PBH13043

REV	AUGER MODEL(S) H1392, H13102, & H13112	PART/ASSEMBLY DESCRIPTION CARRIAGE ASM, H1392, H13102, & H13112
-----	---	--



DRAWING NO.
PBH13043



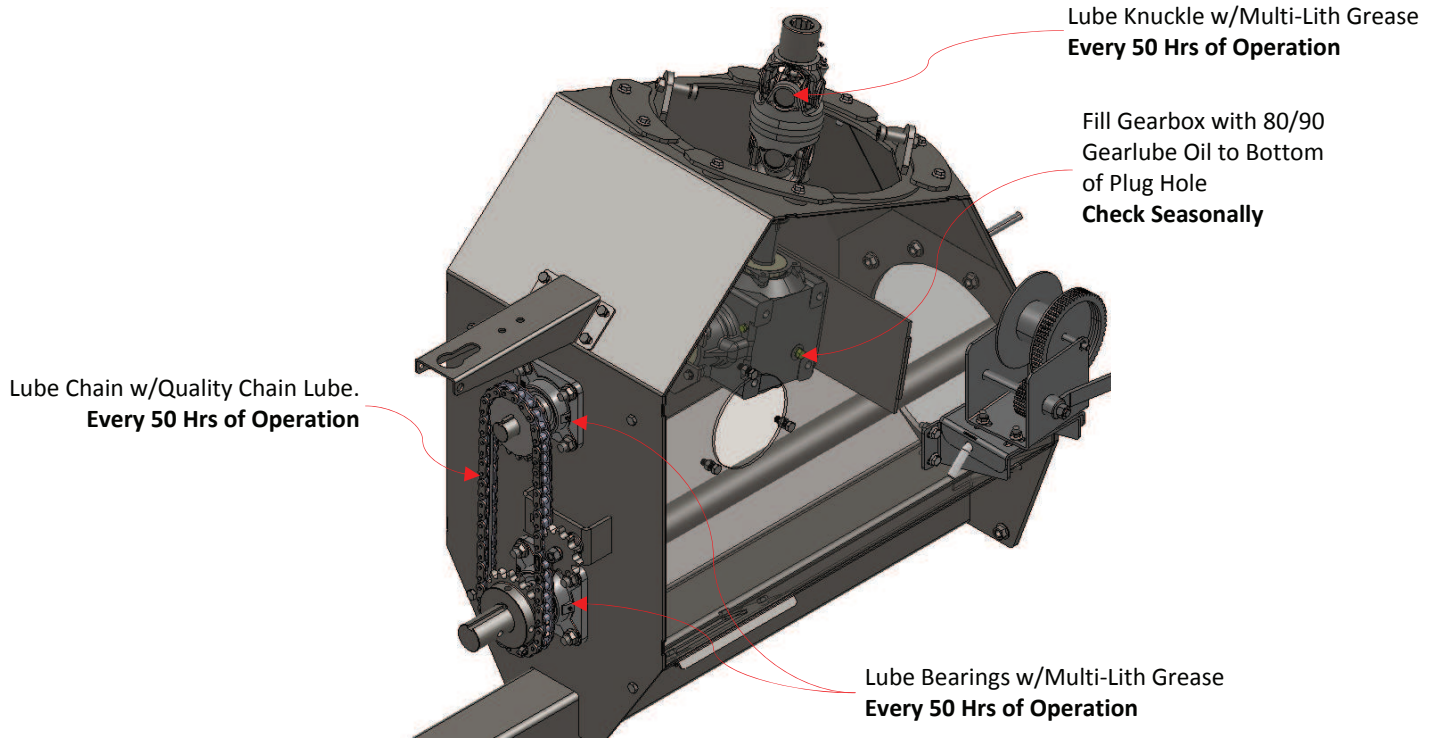
REV	AUGER MODEL(S)	PART/ASSEMBLY DESCRIPTION
-----	----------------	---------------------------

ITEM NO.	PART NO.	DESCRIPTION	QTY
1	10245	ZERK, GREASE, 1/4-28UNF, STRAIGHT	10
2	10304	SCREW, SELF TAPPING, #12 x 3/4"	3
3	10384	PIN, ROLL, 3/8" X 3", ZINC	20
4	10434	NUT, 1/2-20, 60 DEGREE LUG NUT, ZINC	12
5	10439	PLATE, CROSS MOUNT, CARRIAGE STABILIZER, H13XX	1
6	10588A	5/8", OD CLAMP, GALV. VINYL, HYD HOSE RETAIN	3
7	11018	ELBOW, #8 FEMALE JIC TO #8 MALE JIC (6500-08-08)	1
8	11019	TEE, #8 MALE JIC X #8 MALE JIC X #8 FEMALE JIC	1
9	11096	TUBE, X-BRACE, TRUSS, H1392&102	4
10	11100	PIN, CARRIAGE ARM TO AUGER TUBE, H1392&102	1
11	11101	PIN, SCISSOR ARM HINGE, H1392&102	2
12	11102	PIN, SCISSOR ARM TO UPPER AUGER TUBE, H1392	1
13	11103	PIN, CARRIAGE ARM TO AXLE, H1392&102	2
14	11104	PIN, CYLINDER MOUNT, UPPER, H1392&102	2
15	11105	PIN, CYLINDER MOUNT, LOWER, H1392&102	2
16	11114	TUBE, TRUSS, CARRIAGE CROSS, H1392&102	1
17	11186	CLAMP, X-BRACE SCISSOR, H1392&H13102	2
18	30097	VELOCITY FUSE	2
19	30102	CANISTER, OWNERS MANUAL	1
20	30105	BREATHER, 3/8" NPT	2
21	30770	TUBE ASSEMBLY, CARRIAGE, H1392&102	2
22	30787	AXLE EXTENSION ASSEMBLY, RIGHT, H1392&102	1
23	30787A	AXLE EXTENSION ASSEMBLY, LEFT, H1392&102	1
24	30790B	SCISSOR ARM ASSY, UPPER, H1392&102	1
25	30792	CYLINDER, 5" X 42" STROKE	2
26	30794-01	HOSE, 3/8x23", #8 FEMALE JIC BOTH ENDS	1
27	30795	TIRE & RIM ASSY, 11LX15, 12PLY, ON PURE WHITE RIM	2
28	30798	HUB/SPINDLE ASSEMBLY, (6 ON 6") H1392&102	2
29	30800	PIN, AXLE EXTENSION RETAIN, WITH PIN CLIP	2
30	30806	ARM,SCISSOR, LOWER RIGHT, H1392&102	1
31	30807	ARM, SCISSOR, LOWER LEFT, H1392&102	1
32	30808	CYLINDER MOUNT ASSY, H1392&102	1
33	30809	TRANSPORT SUPPORT, H1392&102	1
34	31190	AXLE ASSEMBLY, H1392&102	1
35	40005	BOLT, 1/2-13UNC X 1-1/2" HEX FLANGE, GRD 5, ZINC	16
36	40019	BOLT, 3/4-10UNC X 2" HEX, GRD 5, ZINC	12
37	40025	BOLT, 3/8-16UNC X 1" HEX FLANGE, GRD 5, ZINC	2
38	40041	BOLT, 5/8-11UNC X 1-1/2" HEX FLANGE, GRD 5, ZINC	24
39	40047	NUT, 1/2-13UNC, HEX FLANGE, GRD 5, ZINC	16
40	40049	NUT, 1/4-20UNC, HEX FLANGE, GRD 5, ZINC	3
41	40053	NUT, 3/4-10UNC, HEX FLANGE, GRD 5, ZINC	12
42	40056	NUT, 3/8-16UNC, HEX FLANGE, GRD 5, ZINC	2
43	40061	NUT, 5/8-11UNC, HEX FLANGE, GRD 5, ZINC	24

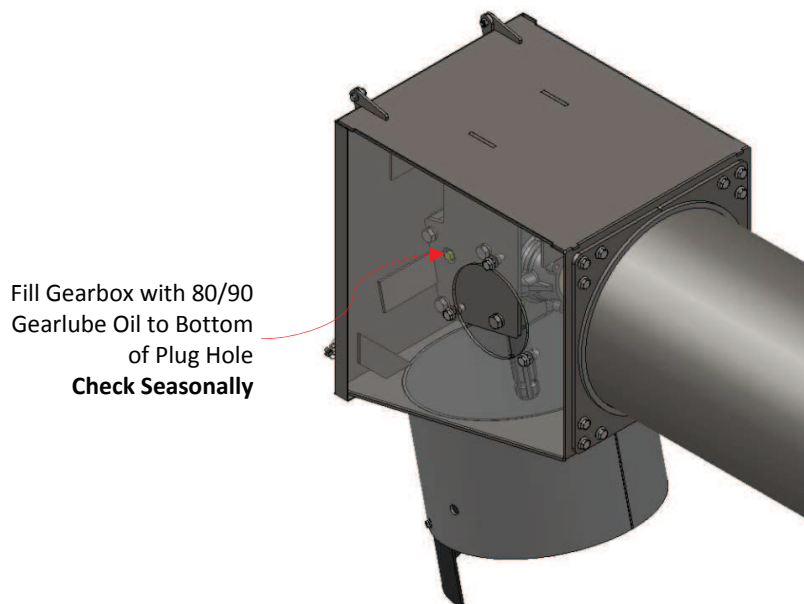
DRAWING NO.
PBH13043

H13XX Lubrication Requirements

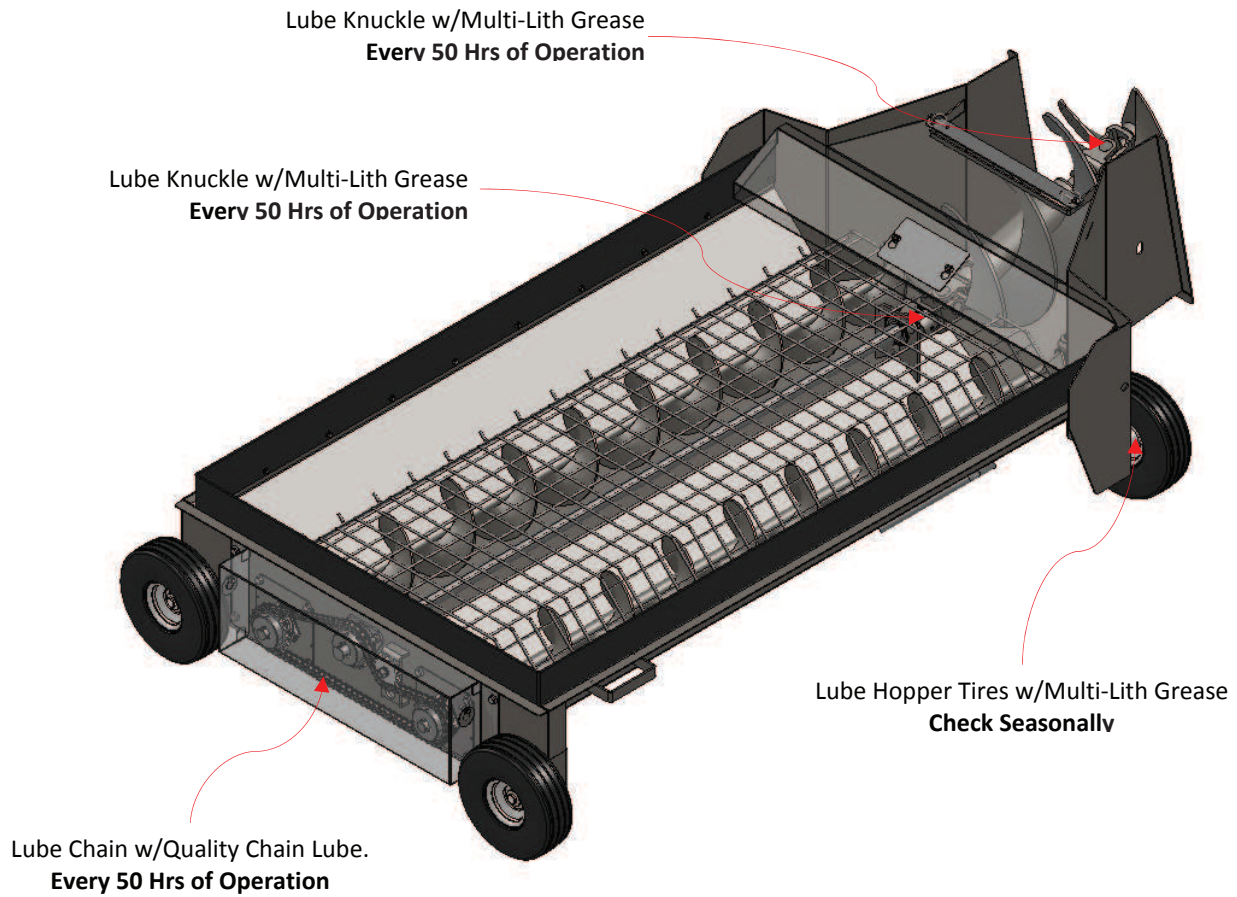
Infeed Housing



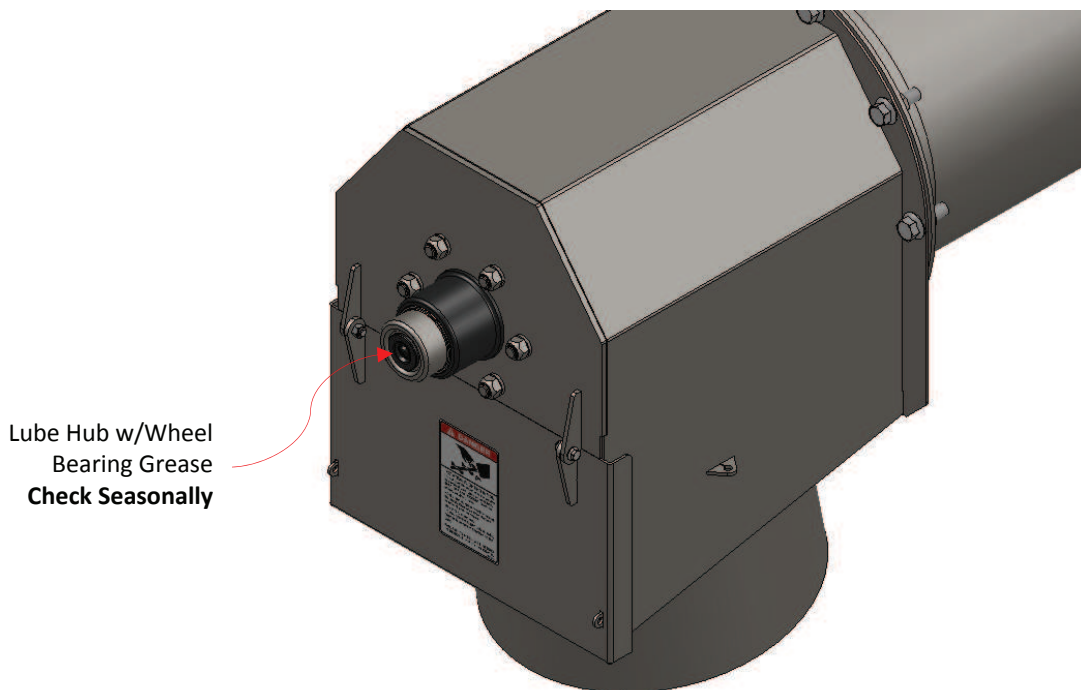
Swing Tube



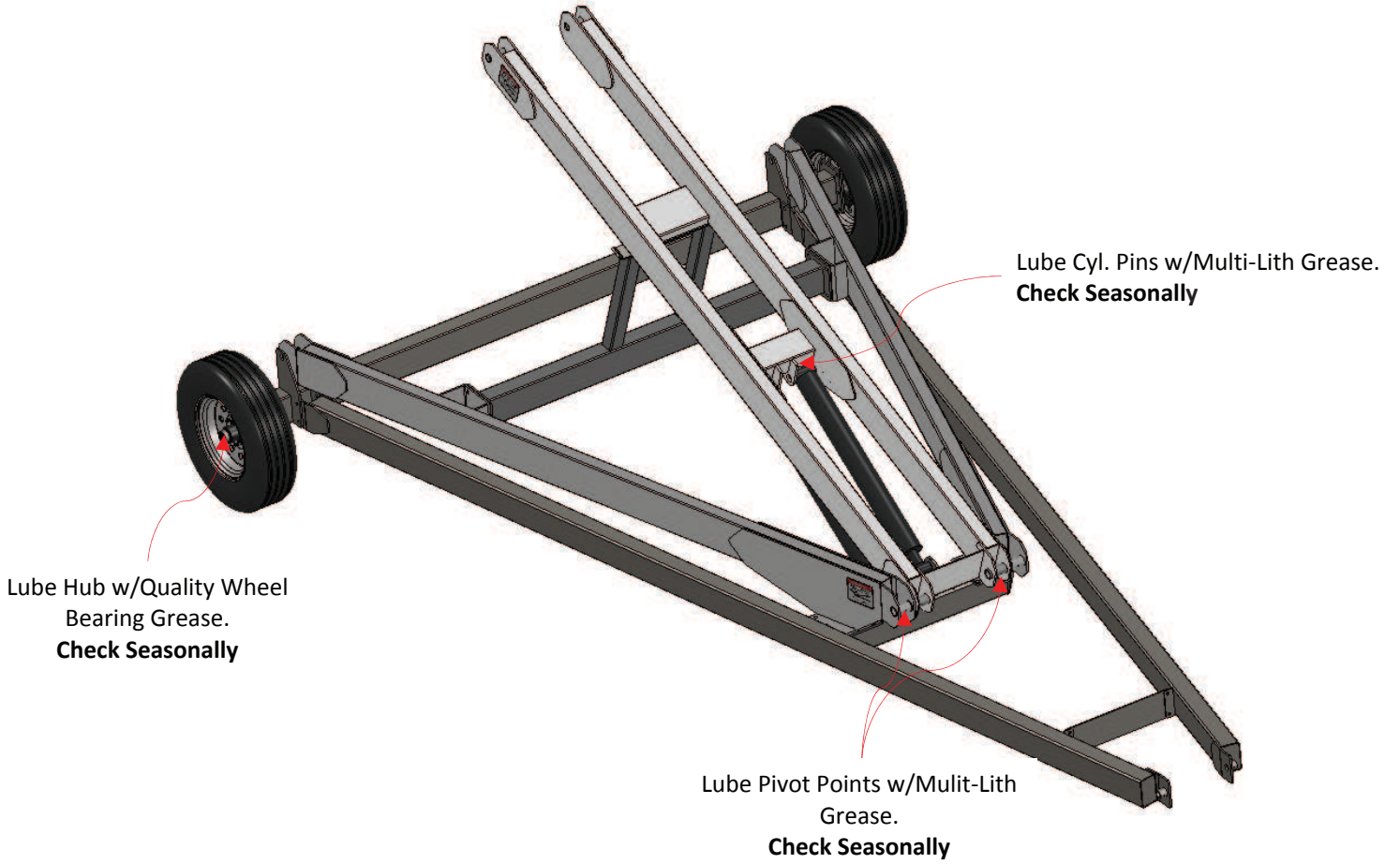
Swing Hopper



Discharge Head



Carriage Assembly





Warranty Policy

Harvest International warrants its products for a period of one (1) year or 90 days for commercial applications from original date of purchase by the original purchaser to be free from defects in material and workmanship under correct, normal agricultural use and proper applications.

Harvest International's obligation under this warranty is limited to the repair or exchange at Harvest International's discretion, of any Harvest International Inc. part or product which proves to be defective as provided Harvest International reserves the right to have the product returned to a dealer of Harvest International or to our factory, with the transportation charges prepaid. This warranty does not obligate Harvest International Inc. to bear the cost of labor in replacing defective parts. Any defects must be reported to the company before the end of the one (1) year period.

This warranty shall not apply to equipment which has been damaged or subject to accident, improperly assembled, or has been altered, improperly maintained or improperly repaired or repaired by anyone other than an authorized Harvest International Inc representative.

The purchaser is solely responsible for determining the suitability of the goods sold. The foregoing is in lieu of all other warranties, expressed or implied, including any warranties that extend beyond the description of the product, and the implied warranty of merchantability is expressly excluded. Harvest International Inc. will be in no event be liable for any incidental or consequential damages whatsoever. Not for any sum in excess of the price received for the goods for which liability is claimed.

Harvest International Inc. makes no express warranties other than those which are specifically described. Any description of goods including any references and specifications in circulars, catalogues, and other written material published is for the sole purpose of identifying goods and shall conform to such descriptions. Any sample or modes if for illustrative purposes only and does not create an express warranty that the goods conform to sample or model shown.

Warranty Labor

The labor rate for replacing defective parts will be at 100% of the current posted show rates at the place of repair. Prior to any work done, you must contact Harvest International Inc. for any labor subject to warranty; this must be authorized by Harvest International.

Warranty Claims

All warranty claims must be prepared on Harvest International Inc. warranty claim forms. With all the information listed in detail. All warranty claims must be submitted within a thirty (30) day period from date of failure, and must be sent to:

Harvest International Inc.
Att: Warranty Department
401 West 20th St.
Storm Lake, Iowa
50588

Warranty Claim Form

Customer Name:	Dealer Name:
Address:	Address
City:	City:
Postal Code:	Postal Code:
Phone #	Phone #
Email:	Email:

Warranty Claim Description:

Date of purchase _____

Date of occurrence _____

Model _____

Serial Number _____

All claims subject to Harvest International approval.



401 West 20th Street
Storm Lake, Iowa 50588
PHONE: 712-213-5100
TOLL FREE: 1-888-218-5373
FAX: 712-213-5109
EMAIL: info@harvestauger.com
WEB: www.harvestauger.com
© Harvest International Inc.

Printed in the United States of America



Warranty Registration

Name:	
Address:	
City:	
State:	
Zip Code:	
Phone #	Cell Phone:
Email:	
Date of Purchase:	
Dealer Name:	
Dealer Address:	
Model:	
Serial #:	

Please return within 10 days to:

Harvest International, Inc.
401 West 20th St.
Storm Lake, IA 50588
712-213-5100
www.harvestauger.com