



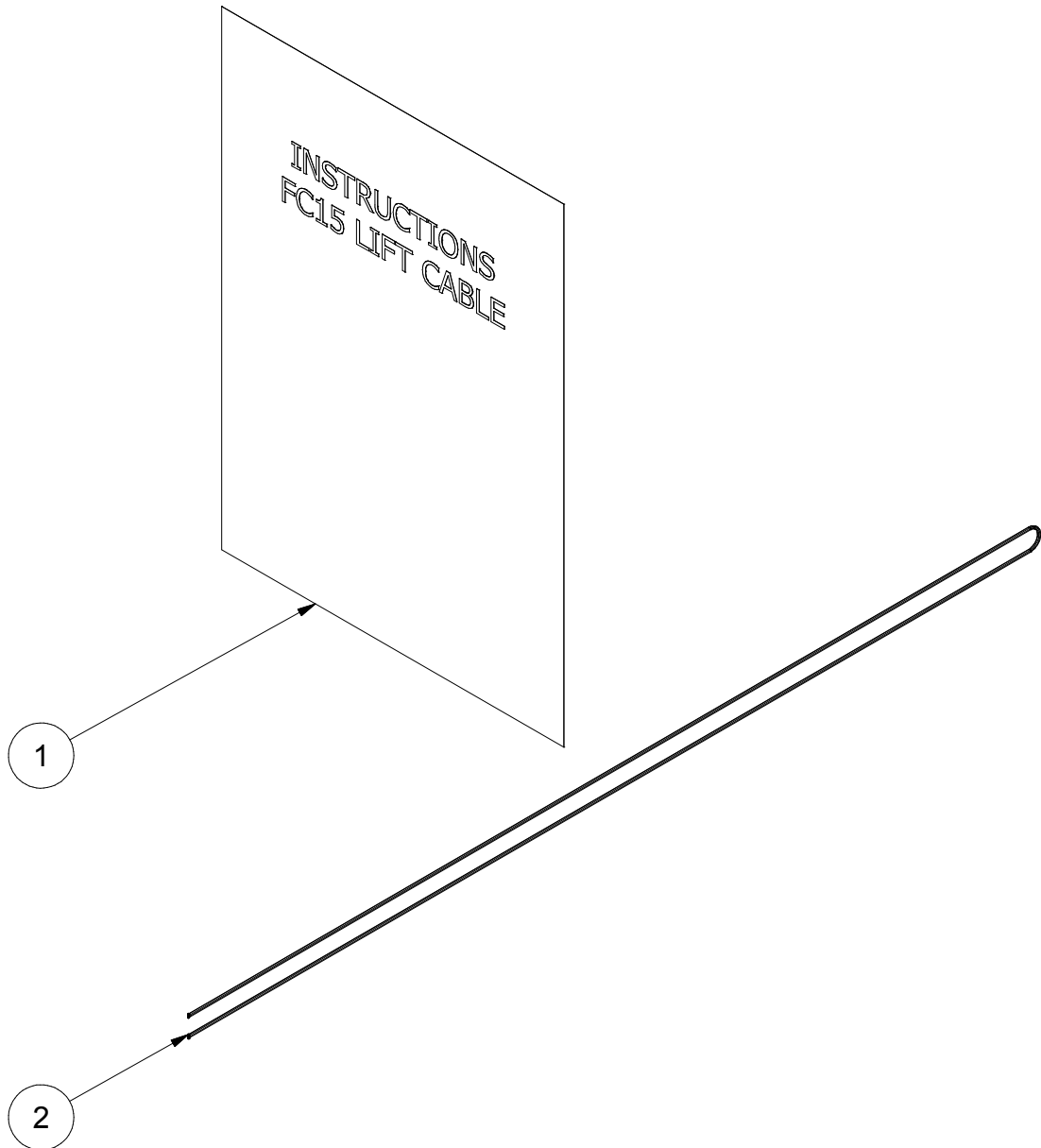
TO: Valued Customers and Dealers  
RE: SolK HVST FC Conveyor Lift Cable  
DATE: 27-Jun-2018  
VERSION: 1  
KIT #: 13000008298-00

This **SERVICE BULLETIN** applies to the FC15 Conveyor Lift Cable.

Failure to ensure that this procedure is completed will result in **INSUFFICIENT LIFT CABLE LENGTH AROUND HYDRAULIC WINCH DRUM.**

# PARTS LIST

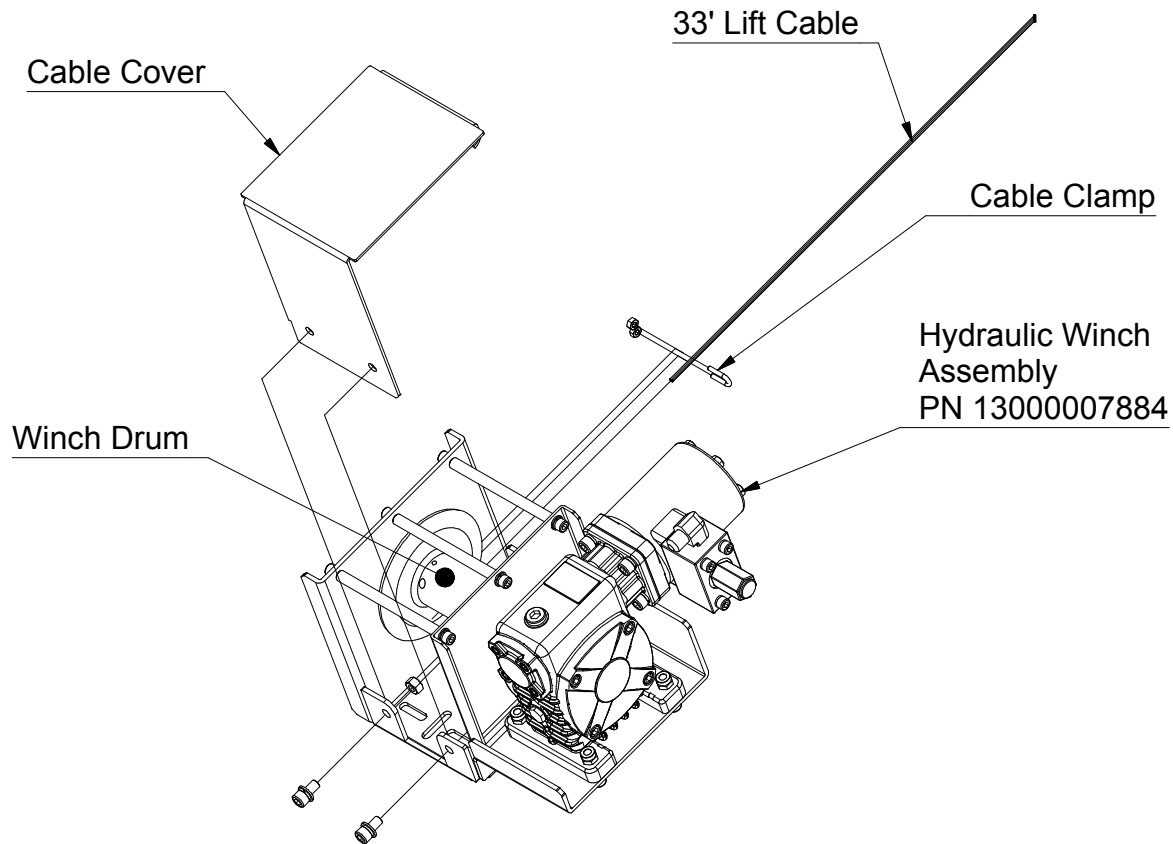
This kit will include the following components:



PARTS LIST OF PN# 13000008298-00			
REF #	PART #	QUANTITY	DESCRIPTION
1	13000008298-01	1	Instructions SolK HVST FC15 Lift Cable
2	13000001423-00	1	Lift Cable 33' x 1/4"

# INSTRUCTIONS

1. Ensure all components listed on Page 2 are included in the kit. If parts are missing contact Meridian Warranty @ 1-306-373-8448.
2. These instructions follow the Assembly Instructions for the FC Field Conveyor Series Hydraulic Winch Accessory Kit.
3. Remove the Cable Cover and 30' Lift Cable from the Hydraulic Winch, as shown in **Figure 1**. Keep the Cable Clamps.
4. Fasten the 33' Lift Cable to the Drum of the Hydraulic Winch Assembly and route it through the Slide Assembly and Cable Tie-Off (see the Lift Cable Assembly section of the FC15 Series Conveyor Assembly and Parts Manual). Use the same Cable Clamps that were removed in Step 3. Reattach the Cable Cover.
5. Hold the 33' Lift Cable out while standing around 5 feet away from the Hydraulic Winch and wearing protective gloves. Slowly start the Hydraulic Winch to wind the 33' Lift Cable around the Winch Drum. Always keep your hands a safe distance away from the Hydraulic Winch. The set up is now complete.



**Figure 1**